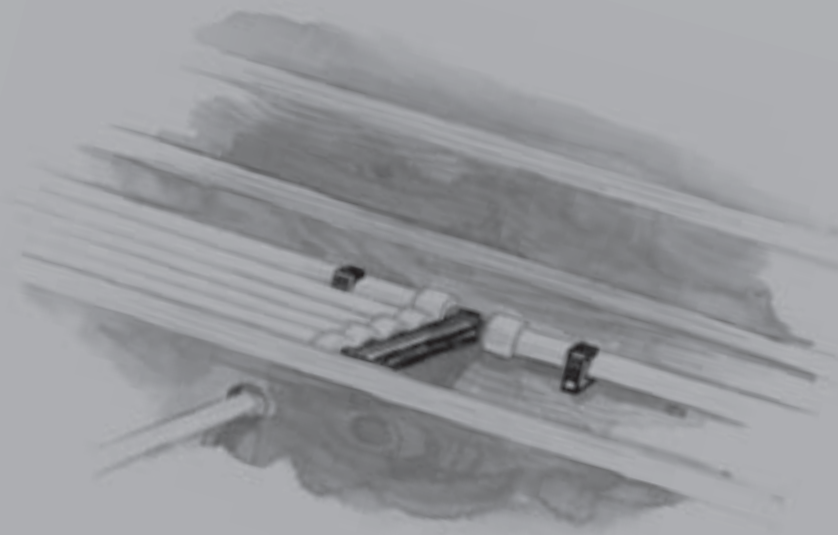


Uponor Logic for Plumbing is about moving water from point A to point B flawlessly.

- Most flexible
- Easy to use
- Unique, superior fittings
- Smart and intuitive installation
- Raising industry standards
- Peace of mind



Uponor Plumbing Systems

Your Solution for Superior Plumbing Performance

When we say Uponor Logic for Plumbing, we mean products, systems and designs that work seamlessly together to move water flawlessly and efficiently throughout a system. It means offering products that effectively meet the needs of our professional partners while designing systems that coordinate with sustainable building practices and offering training and support to pull it all together effortlessly.

Our new lead-free brass transition fittings are an ideal example of Uponor Logic at Work. These fittings meet state lead-free legislation, and combined with our PEX tubing, engineered plastic (EP) offering and ProPEX Out-of-the-Wall support system offer a complete lead-free plumbing system from inlet to faucet.

Additionally, our extensive EP line provides a highly durable plumbing product that offers

a cost-effective solution to effectively meet any residential or commercial application. And Uponor's unique ProPEX fitting system ties it all together. ProPEX is the only fitting system that provides a positive connection with the use of only one tool and without the need for torches, glues, solvents or gauges.

Intelligent design. Tailored solutions. Ultimate performance.

That's Uponor Logic.

Uponor Logic for Plumbing using Engineered Plastic (EP) Multi-port Tees

First Floor



Second Floor



Plumbing method summary (typical 2,300-sq.-ft.-house)

Uponor Logic	Trunk and Branch	Home Run
<ul style="list-style-type: none"> • 14 fittings • 51 connections • 490 feet of tubing • Low connection count means reduced liability • Efficient installations 	<ul style="list-style-type: none"> • 75 fittings • 174 connections • 500 feet of tubing 	<ul style="list-style-type: none"> • 9 fittings • 41 connections • 925 feet of tubing • Low connection count, but much more tubing used

See our full offering of EP Multi-port Tees on pages 75-76.

Uponor Lead-free Brass Transition Fittings Offering

Tur lead-free brass transition fittings, valves and wall boxes carry the NSF us-pw-G marking for lead-free compliance to meet state lead-free legislation, and exceed the U.S. Safe Drinking Water Act. Now you can combine our lead-free brass fittings with our PEX tubing, EP offering and ProPEX Out-of-the-Wall Support System for a complete lead-free solution from the inlet to the faucet. The new lead-free offering includes a total of 34 brass transition fittings and valves available in sizes up to 1¼", and all feature Uponor's unique ProPEX fitting system for strong, durable connections without the need for torches, glues, solvents or gauges.

Part No.	Part Description	Pkg. Qty.	Case Qty.
NEW LF2865050	ProPEX Copper Stub Ell, ½" PEX LF Brass x ½" Copper (3½" x 8")	25	100
NEW LF2885050	ProPEX Copper Tub Ell, ½" PEX LF Brass x ½" Copper (3" x 4")	25	100
NEW LF2957575	ProPEX Water Heater Adapter, ¾" PEX LF Brass x ¾" FIP x 18"	20	-
NEW LF4125050	ProPEX LF Brass Elbow, ½" PEX x ½" MIP	25	100
NEW LF4235050	ProPEX Drop Ear LF Brass Elbow, ½" PEX x ½" FIP	25	100
NEW LF4410500	Compression Angle Stop Valve for ½" PEX, LF Brass	10	100
NEW LF4420500	Compression Straight Stop Valve for ½" PEX, LF Brass	10	100
NEW LF4501010	ProPEX LF Brass Fitting Adapter, 1" PEX x 1" Copper	10	100
NEW LF4501313	ProPEX LF Brass Fitting Adapter, 1¼" PEX x 1¼" Copper	10	-
NEW LF4505050	ProPEX LF Brass Fitting Adapter, ½" PEX x ½" Copper	25	100
NEW LF4505075	ProPEX LF Brass Fitting Adapter, ½" PEX x ¾" Copper	25	100
NEW LF4507575	ProPEX LF Brass Fitting Adapter, ¾" PEX x ¾" Copper	25	100
NEW LF4511010	ProPEX LF Brass Sweat Adapter, 1" PEX x 1" Copper	10	100
NEW LF4511313	ProPEX LF Brass Sweat Adapter, 1¼" PEX x 1¼" Copper	10	-
NEW LF4515050	ProPEX LF Brass Sweat Adapter, ½" PEX x ½" Copper	25	100
NEW LF4515075	ProPEX LF Brass Fitting Adapter, ½" PEX x ¾" Copper	25	100
NEW LF4517575	ProPEX LF Brass Sweat Adapter, ¾" PEX x ¾" Copper	25	100
NEW LF4521010	ProPEX LF Brass Male Threaded Adapter, 1" PEX x 1" NPT	10	100
NEW LF4521313	ProPEX LF Brass Male Threaded Adapter, 1¼" PEX x 1¼" NPT	10	-
NEW LF4525050	ProPEX LF Brass Male Threaded Adapter, ½" PEX x ½" NPT	25	100
NEW LF4527575	ProPEX LF Brass Male Threaded Adapter, ¾" PEX x ¾" NPT	25	100
NEW LF4571010	ProPEX LF Brass Female Threaded Adapter, 1" PEX x 1" NPT	10	100
NEW LF4571313	ProPEX LF Brass Female Threaded Adapter, 1¼" PEX x 1¼" NPT	10	-
NEW LF4575050	ProPEX LF Brass Female Threaded Adapter, ½" PEX x ½" NPT	25	100
NEW LF4577575	ProPEX LF Brass Female Threaded Adapter, ¾" PEX x ¾" NPT	25	100
NEW LF4795050	ProPEX LF Brass Ball Valve, ½" PEX x ½" MIP	10	100
NEW LF4805050	ProPEX LF Brass Ball Valve (large bore), ½" PEX x ½" Copper Adapter	10	100
NEW LF4817575	ProPEX LF Brass Ball Valve (large bore), ¾" PEX x ¾" PEX	10	100
NEW LF4821010	ProPEX LF Brass Ball Valve (full port), 1" PEX x 1" PEX	10	100
NEW LF4827575	ProPEX LF Brass Ball Valve (full port), ¾" PEX x ¾" PEX	10	100
NEW LF4855038	ProPEX Full Port LF Brass Angle Stop Valve for ½" PEX	10	100
NEW LF4865038	ProPEX Full Port LF Brass Straight Stop Valve for ½" PEX	10	100
NEW LF5930500	ProPEX Washing Machine Outlet Box, ½" LF Brass Valves	12	-
NEW LF5955025	ProPEX Ice Maker Box with Support Brackets, ½" LF Brass Valve	12	-

Uponor Plumbing Systems

Uponor AquaPEX White Tubing

Uponor AquaPEX tubing is used in hot and cold potable water distribution systems and Uponor residential fire safety systems. Uponor AquaPEX tubing is suitable for use in hydronic heating applications where the system contains no ferrous corrodible components or where any ferrous components are isolated from the tubing. Uponor AquaPEX tubing coils and straight lengths come in red, white and blue for potable applications, and purple for water reclamation applications.

Uponor AquaPEX tubing is manufactured and listed to ASTM F876 and F877 and CSA B137.5, certified to NSF Standards 14 and 61 and listed by the Hydrostatic Stress Board of PPI at 200°F at 80 psi, 180°F at 100 psi and 73.4°F at 160 psi. Uponor AquaPEX tubing (½", ¾" and 1" sizes only) is listed to UL 1821 and ULC/ORD C199P and carries an additional rating of 120°F at 130 psi.

Uponor AquaPEX Tubing Coil— White



Part No.	Part Description	Coil/Pallet
F1040500	½" Uponor AquaPEX White, 100-ft. coil	22
F1060500	½" Uponor AquaPEX White, 300-ft. coil	18
F1100500	½" Uponor AquaPEX White, 500-ft. coil	12
F1120500	½" Uponor AquaPEX White, 1,000-ft. coil	8
F1040750	¾" Uponor AquaPEX White, 100-ft. coil	11
F1060750	¾" Uponor AquaPEX White, 300-ft. coil	12
F1100750	¾" Uponor AquaPEX White, 500-ft. coil	8
F1041000	1" Uponor AquaPEX White, 100-ft. coil	12
F1061000	1" Uponor AquaPEX White, 300-ft. coil	5
F1061250	1¼" Uponor AquaPEX White, 100-ft. coil	7
F1021250	1¼" Uponor AquaPEX White, 300-ft. coil	2
F1061500	1½" Uponor AquaPEX White, 100-ft. coil	7
F1021500	1½" Uponor AquaPEX White, 300-ft. coil	2
F1062000	2" Uponor AquaPEX White, 100-ft. coil	1
F1052000	2" Uponor AquaPEX White, 200-ft. coil	1
F1022000	2" Uponor AquaPEX White, 300-ft. coil	1

2" Uponor AquaPEX Expansion Joint Kit — White



Part No.	Part Description	Coil/Pallet
F8052000	2" Uponor AquaPEX Expansion Joint Kit – white	1

Uponor AquaPEX Tubing Straight Length — White



Part No.	Part Description	Each Qty.
F1930500	½" Uponor AquaPEX White, 20-ft. straight length, 500 ft.	1
F1930750	¾" Uponor AquaPEX White, 20-ft. straight length, 300 ft.	1
F1921000	1" Uponor AquaPEX White, 20-ft. straight length, 200 ft.	1
F1921250	1¼" Uponor AquaPEX White, 20-ft. straight length, 100 ft.	1
F1921500	1½" Uponor AquaPEX White, 20-ft. straight length, 100 ft.	1
F1922000	2" Uponor AquaPEX White, 20-ft. straight length, 100 ft.	1

Uponor Plumbing Systems

Uponor AquaPEX Red and Blue Tubing

Part No.	Part Description	Coil/Pallet
F2040500	1/2" Uponor AquaPEX Red, 100-ft. coil	22
F2060500	1/2" Uponor AquaPEX Red, 300-ft. coil	18
F2120500	1/2" Uponor AquaPEX Red, 1,000-ft. coil	8
F2040750	3/4" Uponor AquaPEX Red, 100-ft. coil	11
F2060750	3/4" Uponor AquaPEX Red, 300-ft. coil	12
F2100750	3/4" Uponor AquaPEX Red, 500-ft. coil	8
F2041000	1" Uponor AquaPEX Red, 100-ft. coil	12
F2061000	1" Uponor AquaPEX Red, 300-ft. coil	5
F2101000	1" Uponor AquaPEX Red, 500-ft. coil	6

Uponor AquaPEX Tubing Coil — Red



Part No.	Part Description	Each Qty.
F2930500	1/2" Uponor AquaPEX Red, 20-ft. straight length, 500 ft.	1
F2930750	3/4" Uponor AquaPEX Red, 20-ft. straight length, 300 ft.	1
F2921000	1" Uponor AquaPEX Red, 20-ft. straight length, 200 ft.	1

Uponor AquaPEX Tubing Straight Length — Red



Part No.	Part Description	Coil/Pallet
F3040500	1/2" Uponor AquaPEX Blue, 100-ft. coil	22
F3060500	1/2" Uponor AquaPEX Blue, 300-ft. coil	18
F3120500	1/2" Uponor AquaPEX Blue, 1,000-ft. coil	8
F3040750	3/4" Uponor AquaPEX Blue, 100-ft. coil	11
F3060750	3/4" Uponor AquaPEX Blue, 300-ft. coil	12
F3100750	3/4" Uponor AquaPEX Blue, 500-ft. coil	8
F3041000	1" Uponor AquaPEX Blue, 100-ft. coil	12
F3061000	1" Uponor AquaPEX Blue, 300-ft. coil	5
F3101000	1" Uponor AquaPEX Blue, 500-ft. coil	6

Uponor AquaPEX Tubing Coil — Blue



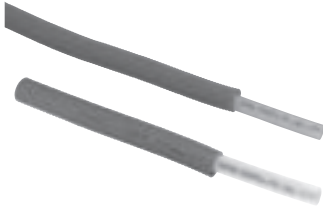
Part No.	Part Description	Each Qty.
F3930500	1/2" Uponor AquaPEX Blue, 20-ft. straight length, 500 ft.	1
F3930750	3/4" Uponor AquaPEX Blue, 20-ft. straight length, 300 ft.	1
F3921000	1" Uponor AquaPEX Blue, 20-ft. straight length, 200 ft.	1

Uponor AquaPEX Tubing Straight Length — Blue



Uponor Plumbing Systems

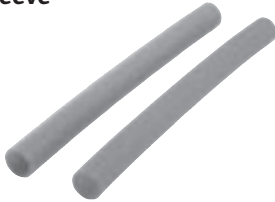
Pre-sleeved Uponor AquaPEX Tubing



Pre-sleeved Uponor AquaPEX tubing is used in hot and cold water distribution systems. The high-density polyethylene (HDPE) corrugated sleeve provides protection for installations in concrete slabs or soil, and allows for removal and replacement of the tubing if required.

Part No.	Part Description	Pallet Qty.
F1092500	1/2" Pre-sleeved Uponor AquaPEX Red Sleeve, 400-ft. coil	4
F1091500	1/2" Pre-sleeved Uponor AquaPEX Blue Sleeve, 400-ft. coil	4
F1092750	3/4" Pre-sleeved Uponor AquaPEX Red Sleeve, 400-ft. coil	3
F1091750	3/4" Pre-sleeved Uponor AquaPEX Blue Sleeve, 400-ft. coil	3

Uponor AquaPEX Tubing Sleeve



High Density Polyethylene (HDPE) corrugated sleeve is used in hot and cold water distribution systems, primarily in commercial applications where the potable tubing is installed in the slab. Designed for use with 1/2" AQUAPEX tubing, the sleeve provides protection during installation and allows for removal and replacement if required.

Part No.	Part Description	Each Qty.
F1035400	1/2" HDPE Corrugated Sleeve, Red, 400-ft. coil	1
F1055400	1/2" HDPE Corrugated Sleeve, Blue, 400-ft. coil	1

Pre-insulated Uponor AquaPEX Tubing Coil — White



Pre-insulated Uponor AquaPEX tubing is used in hot and cold water distribution systems. The PEX foam insulation provides the necessary insulation to meet the requirements of the energy codes or local code requirements where insulation is required on hot water lines. The insulation provides additional efficiency to the hot water distribution system.

Part No.	Part Description	Coil/Pallet
NEW F6040500	1/2" Pre-insulated Uponor AquaPEX Tubing — 1/2" insulation, 100-ft. coil	3
NEW F6040750	3/4" Pre-insulated Uponor AquaPEX Tubing — 1/2" insulation, 100-ft. coil	3
NEW F6041000	1" Pre-insulated Uponor AquaPEX Tubing — 1/2" insulation, 100-ft. coil	4

Pre-insulated Uponor AquaPEX Tubing Straight Length — White



Part No.	Part Description	Pkg. Qty.
NEW F6921250	1 1/4" Pre-insulated Uponor AquaPEX White — 1/2" insulation, 20-ft. straight length, 100-ft.	4
NEW F6921500	1 1/2" Pre-insulated Uponor AquaPEX White — 1/2" insulation, 20-ft. straight length, 100-ft.	4
NEW F6922000	2" Pre-insulated Uponor AquaPEX White — 1/2" insulation, 20-ft. straight length, 100-ft.	3

Uponor AquaPEX Reclaimed Water Tubing — Purple

Uponor AquaPEX reclaimed water tubing has an outer purple coating specifically designed for use in reclaimed or grey water distribution systems. Uponor AquaPEX reclaimed water tubing is available in coils, and is manufactured and listed to ASTM F876, F877 and CSA B137.5, certified to NSF Standard 14 for non-potable water applications.

Part No.	Part Description	Coil/Pallet
NEW F1060502	1/2" Uponor AquaPEX Purple Reclaimed Water, 300 ft. coil	18
NEW F1060752	3/4" Uponor AquaPEX Purple Reclaimed Water, 300 ft. coil	22
NEW F1061002	1" Uponor AquaPEX Purple Reclaimed Water, 300 ft. coil	5

EP Multi-port Tees

EP Branch Multi-port Tee features $\frac{3}{4}$ " ProPEX inlet with $\frac{1}{2}$ " ProPEX branch outlets. The Multi-port Tee is made of EP, which is proven in demanding hot-water applications.

Note: ProPEX Tool is required. ProPEX Rings sold separately.

Part No.	Part Description	Each Qty.	Pkg. Qty.
Q2237550	$\frac{3}{4}$ " EP Branch Multi-port Tee, 3 outlets	-	10
Q2247550	$\frac{3}{4}$ " EP Branch Multi-port Tee, 4 outlets	-	10
Q2267550	$\frac{3}{4}$ " EP Branch Multi-port Tee, 6 outlets	-	10
Q2261050	1" EP Branch Multi-port Tee, 6 outlets	-	10

EP Branch Multi-port Tee



EP Flow-through Multi-port Tee features $\frac{3}{4}$ " ProPEX inlets with $\frac{1}{2}$ " ProPEX branch outlets or 1" ProPEX inlets or $\frac{3}{4}$ " ProPEX inlets with $\frac{1}{2}$ " ProPEX branch outlets. The tee is made of EP, which is proven in demanding hot-water applications.

Note: ProPEX Tool is required. ProPEX Rings sold separately.

Part No.	Part Description	Each Qty.	Pkg. Qty.
Q2227557	EP Flow-through Multi-port Tee, 2 outlets, $\frac{3}{4}$ " x $\frac{3}{4}$ " ProPEX	-	10
Q2237557	EP Flow-through Multi-port Tee, 3 outlets, $\frac{3}{4}$ " x $\frac{3}{4}$ " ProPEX	-	10
Q2247557	EP Flow-through Multi-port Tee, 4 outlets, $\frac{3}{4}$ " x $\frac{3}{4}$ " ProPEX	-	10
Q2241057	EP Flow-through Multi-port Tee, 4 outlets, 1" x $\frac{3}{4}$ " ProPEX	-	10
Q2267557	EP Flow-through Multi-port Tee, 6 outlets, $\frac{3}{4}$ " x $\frac{3}{4}$ " ProPEX	-	10
Q2261057	EP Flow-through Multi-port Tee, 6 outlets, 1" x $\frac{3}{4}$ " ProPEX	-	10
Q2261051	EP Flow-through Multi-port Tee, 6 outlets, 1" x 1" ProPEX	-	10

EP Flow-through Multi-port Tee



EP Flow-through Opposing-port Multi-port Tee features $\frac{3}{4}$ " ProPEX inlets with opposing $\frac{1}{2}$ " ProPEX branch outlets. These are designed for a central location to facilitate piping in two directions. The tee is made of EP, which is proven in demanding hot-water applications.

Note: ProPEX Tool is required. ProPEX Rings sold separately.

Part No.	Part Description	Each Qty.	Pkg. Qty.
Q2337557	EP Flow-through Opposing-port Multi-port Tee, 3 outlets, $\frac{3}{4}$ " x $\frac{3}{4}$ " ProPEX	-	10
Q2347557	EP Flow-through Opposing-port Multi-port Tee, 4 outlets, $\frac{3}{4}$ " x $\frac{3}{4}$ " ProPEX	-	10
Q2367557	EP Flow-through Opposing-port Multi-port Tee, 6 outlets, $\frac{3}{4}$ " x $\frac{3}{4}$ " ProPEX	-	10

EP Flow-through Opposing-port Multi-port Tee



EP Branch Opposing-port Multi-port Tee features a $\frac{3}{4}$ " ProPEX inlet with opposing $\frac{1}{2}$ " ProPEX branch outlets. These are designed for a central location to facilitate piping in two directions. The tee is made of EP, which is proven in demanding hot-water applications.

Note: ProPEX Tool is required. ProPEX Rings sold separately.

Part No.	Part Description	Each Qty.	Pkg. Qty.
Q2337550	$\frac{3}{4}$ " EP Branch Opposing-port Multi-port Tee, 3 outlets	-	10
Q2347550	$\frac{3}{4}$ " EP Branch Opposing-port Multi-port Tee, 4 outlets	-	10
Q2387550	$\frac{3}{4}$ " EP Branch Opposing-port Multi-port Tee, 8 outlets	-	10

EP Branch Opposing-port Multi-port Tee



Uponor Plumbing Systems

EP Flow-through Roll-out Multi-port Tee



EP Flow-through Vertical Multi-port Tee features an integrated vertical $\frac{3}{4}$ " ProPEX tee with $\frac{1}{2}$ " ProPEX branch outlets. The Multi-port Tee is designed for demanding slab-on-grade plumbing applications, and eliminates the need for multiple connections. The tee is made of EP, which is proven in demanding hot-water applications.

Note: ProPEX Tool is required. ProPEX Rings sold separately.

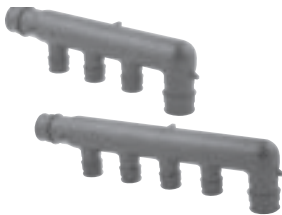
Part No.	Part Description	Each Qty.	Pkg. Qty.
Q2237757	EP Flow-through Multi-port Vertical Tee, 3 outlets, $\frac{3}{4}$ " x $\frac{3}{4}$ " x $\frac{3}{4}$ " ProPEX	-	10
Q2247757	EP Flow-through Multi-port Vertical Tee, 4 outlets, $\frac{3}{4}$ " x $\frac{3}{4}$ " x $\frac{3}{4}$ " ProPEX	-	10

EP Flow-through Multi-port Horizontal Tee features an integrated horizontal $\frac{3}{4}$ " ProPEX tee with $\frac{1}{2}$ " ProPEX branch outlets. The Multi-port Tee is designed for demanding slab-on-grade plumbing applications, and eliminates the need for multiple connections. The tee is made of EP, which is proven in demanding hot-water applications.

Note: ProPEX Tool is required. ProPEX Rings sold separately.

Part No.	Part Description	Each Qty.	Pkg. Qty.
Q2247577	EP Flow-through Multi-port Horizontal Tee, 4 outlets, $\frac{3}{4}$ " x $\frac{3}{4}$ " x $\frac{3}{4}$ " ProPEX	-	10

EP Flow-through Roll-out Multi-port Elbow



EP Flow-through Roll-out Multi-port Elbow features an integrated $\frac{3}{4}$ " ProPEX elbow with $\frac{1}{2}$ " ProPEX branch outlets. The elbow is designed for demanding slab-on-grade plumbing applications, and eliminates the need for multiple connections. The elbow is made of EP, which is proven in demanding hot-water applications.

Note: ProPEX Tool is required. ProPEX Rings sold separately.

Part No.	Part Description	Each Qty.	Pkg. Qty.
Q2235577	EP Flow-through Roll-out Multi-port Elbow, 3 outlets, $\frac{3}{4}$ " x $\frac{3}{4}$ " ProPEX	-	10
Q2245577	EP Flow-through Roll-out Multi-port Elbow, 4 outlets, $\frac{3}{4}$ " x $\frac{3}{4}$ " ProPEX	-	10

EP Branch Multi-port Elbow

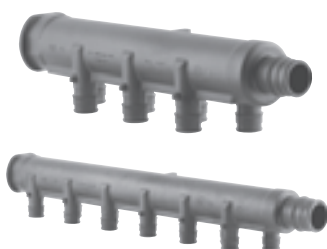


EP Branch Multi-port Elbow features an integrated $\frac{3}{4}$ " or 1" ProPEX elbow inlet with $\frac{1}{2}$ " ProPEX branch outlets. The elbow is designed for commercial plumbing applications, and eliminates the need for multiple connections. The elbow is made of EP, which is proven in demanding hot-water applications.

Note: ProPEX Tool is required. ProPEX Rings sold separately.

Part No.	Part Description	Each Qty.	Pkg. Qty.
Q2077550	$\frac{3}{4}$ " EP Branch Multi-port Elbow, 7 outlets	-	5
Q2087550	$\frac{3}{4}$ " EP Branch Multi-port Elbow, 8 outlets	-	5
Q2101000	1" EP Branch Multi-port Elbow, 10 outlets	-	5

EP Branch Multi-port Tee



EP Branch Multi-port Tee features an integrated $\frac{3}{4}$ " or 1" ProPEX inlet with $\frac{1}{2}$ " ProPEX branch outlets. The tee is designed for commercial plumbing applications, and eliminates the need for multiple connections. The tee is made of EP, which is proven in demanding hot-water applications.

Note: ProPEX Tool is required. ProPEX Rings sold separately.

Part No.	Part Description	Each Qty.	Pkg. Qty.
Q2277550	$\frac{3}{4}$ " EP Branch Multi-port Tee, 7 outlets	-	5
Q2287550	$\frac{3}{4}$ " EP Branch Multi-port Tee, 8 outlets	-	5
Q2101051	1" EP Branch Multi-port Tee, 10 outlets	-	5
Q2121051	1" EP Branch Multi-port Tee, 12 outlets	-	5

ProPEX EP Fittings

A ProPEX Ring is required to make a ProPEX connection. The 1/2" rings now include a leading edge chamfer and integral stop edge to further simplify the use of ProPEX fittings. Red and blue print on the rings distinguishes hot and cold lines.

ProPEX Ring

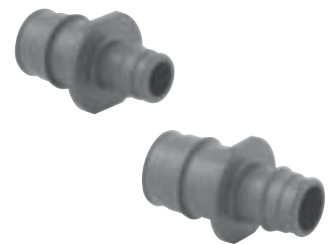


Part No.	Part Description	Pkg. Qty.	Case Qty.
◀ Q4690511	ProPEX Ring with Stop, 1/2" (red print)	50	2,000
NEW Q4690512	ProPEX Ring with Stop, 1/2"	50	2,000
Q4690503	ProPEX Ring, 1/2" red	50	2,000
Q4690504	ProPEX Ring, 1/2" blue	50	2,000
NEW Q4690756	ProPEX Ring with Stop, 3/4"	50	1,000
Q4690753	ProPEX Ring, 3/4" red	50	1,000
Q4690754	ProPEX Ring, 3/4" blue	50	1,000
Q4681000	ProPEX Ring, 1"	50	500
Q4691003	ProPEX Ring, 1" Red	50	500
Q4691004	ProPEX Ring, 1" Blue	50	500
Q4681250	ProPEX Ring, 1 1/4"	10	200
Q4681500	ProPEX Ring, 1 1/2"	5	100
Q4682000	ProPEX Ring, 2"	10	100
Q4681003	ProPEX Ring, 1" red	50	500
Q4681004	ProPEX Ring, 1" blue	50	500

ProPEX EP Coupling makes PEX-to-PEX connections.

Note: ProPEX Tool is required. ProPEX Rings sold separately.

ProPEX EP Coupling



Part No.	Part Description	Pkg. Qty.	Case Qty.
Q4775050	ProPEX EP Coupling, 1/2" PEX x 1/2" PEX	25	100
Q4775075	ProPEX EP Coupling, 1/2" PEX x 3/4" PEX	25	100
Q477575	ProPEX EP Coupling, 3/4" PEX x 3/4" PEX	25	100
Q477510	ProPEX EP Coupling, 3/4" PEX x 1" PEX	10	100
Q4771010	ProPEX EP Coupling, 1" PEX x 1" PEX	10	100
NEW Q4771307	ProPEX EP Coupling, 1 1/4" PEX x 3/4" PEX	10	100
NEW Q4771310	ProPEX EP Coupling, 1 1/4" PEX x 1" PEX	10	100
NEW Q4771313	ProPEX EP Coupling, 1 1/4" PEX x 1 1/4" PEX	10	100
NEW Q4771507	ProPEX EP Coupling, 1 1/2" PEX x 3/4" PEX	10	100
NEW Q4771510	ProPEX EP Coupling, 1 1/2" PEX x 1" PEX	10	100
NEW Q4771513	ProPEX EP Coupling, 1 1/2" PEX x 1 1/4" PEX	10	100
NEW Q4771515	ProPEX EP Coupling, 1 1/2" PEX x 1 1/2" PEX	10	100
NEW Q4772020	ProPEX EP Coupling, 2" PEX x 2" PEX	5	-

◀ Discontinued item; available while quantities last. Please contact Uponor Customer Service for availability. All sales are final.

Uponor Plumbing Systems

ProPEX EP Elbow



ProPEX EP Elbow makes tight 90-degree connections for Uponor AquaPEX tubing in supply and return mains.

Note: ProPEX Tool is required. ProPEX Rings sold separately.


Part No.	Part Description	Pkg. Qty.	Case Qty.
Q4760500	ProPEX EP Elbow, 1/2" PEX x 1/2" PEX	25	100
Q4760750	ProPEX EP Elbow, 3/4" PEX x 3/4" PEX	25	100
Q4761000	ProPEX EP Elbow, 1" PEX x 1" PEX	10	100
Q4761250	ProPEX EP Elbow, 1 1/4" PEX x 1 1/4" PEX	10	100
Q4761500	ProPEX EP Elbow, 1 1/2" PEX x 1 1/2" PEX	10	100
 Q4762000	ProPEX EP Elbow, 2" PEX x 2" PEX	5	-

ProPEX EP Tee



ProPEX EP Tee makes diverting connections for Uponor AquaPEX tubing in supply and return mains. Branch size is listed last in the part description.

Note: ProPEX Tool is required. ProPEX Rings sold separately.

Part No.	Part Description	Pkg. Qty.	Case Qty.
Q4755050	ProPEX EP Tee, 1/2" PEX x 1/2" PEX x 1/2" PEX	25	100
Q4757575	ProPEX EP Tee, 3/4" PEX x 3/4" PEX x 3/4" PEX	25	100
Q4751010	ProPEX EP Tee, 1" PEX x 1" PEX x 1" PEX	10	100
Q4751313	ProPEX EP Tee, 1 1/4" PEX x 1 1/4" PEX x 1 1/4" PEX	10	100
Q4751515	ProPEX EP Tee, 1 1/2" PEX x 1 1/2" PEX x 1 1/2" PEX	10	100
 Q4752000	ProPEX EP Tee, 2" PEX x 2" PEX x 2" PEX	5	-

Uponor Plumbing Systems

ProPEX EP Reducing Tee makes diverting connections for Uponor AquaPEX tubing in supply and return mains. Branch size is listed last in the part description.

ProPEX EP Reducing Tee

Note: ProPEX Tool is required. ProPEX Rings sold separately.



Part No.	Part Description	Pkg. Qty.	Case Qty.
Q4755575	ProPEX EP Reducing Tee, 1/2" PEX x 1/2" PEX x 3/4" PEX	25	100
Q4757555	ProPEX EP Reducing Tee, 3/4" PEX x 1/2" PEX x 1/2" PEX	25	100
Q4757557	ProPEX EP Reducing Tee, 3/4" PEX x 1/2" PEX x 3/4" PEX	25	100
Q4757550	ProPEX EP Reducing Tee, 3/4" PEX x 3/4" PEX x 1/2" PEX	25	100
Q4757710	ProPEX EP Reducing Tee, 3/4" PEX x 3/4" PEX x 1" PEX	10	100
Q4751775	ProPEX EP Reducing Tee, 1" PEX x 3/4" PEX x 3/4" PEX	10	100
Q4751751	ProPEX EP Reducing Tee, 1" PEX x 3/4" PEX x 1" PEX	10	100
Q4751150	ProPEX EP Reducing Tee, 1" PEX x 1" PEX x 1/2" PEX	10	100
Q4751175	ProPEX EP Reducing Tee, 1" PEX x 1" PEX x 3/4" PEX	10	100
Q4751317	ProPEX EP Reducing Tee, 1 1/4" PEX x 1" PEX x 3/4" PEX	10	100
Q4751311	ProPEX EP Reducing Tee, 1 1/4" PEX x 1" PEX x 1" PEX	10	100
Q4751337	ProPEX EP Reducing Tee, 1 1/4" PEX x 1 1/4" PEX x 3/4" PEX	10	100
Q4751331	ProPEX EP Reducing Tee, 1 1/4" PEX x 1 1/4" PEX x 1" PEX	10	100
Q4751517	ProPEX EP Reducing Tee, 1 1/2" PEX x 1" PEX x 3/4" PEX	10	100
Q4751511	ProPEX EP Reducing Tee, 1 1/2" PEX x 1" PEX x 1" PEX	10	100
NEW Q4751531	ProPEX EP Reducing Tee, 1 1/2" PEX x 1 1/4" PEX x 1" PEX	10	100
NEW Q4751533	ProPEX EP Reducing Tee, 1 1/2" PEX x 1 1/4" PEX x 1 1/4" PEX	10	100
NEW Q4751537	ProPEX EP Reducing Tee, 1 1/2" PEX x 1 1/4" PEX x 3/4" PEX	10	100
Q4751557	ProPEX EP Reducing Tee, 1 1/2" PEX x 1 1/2" PEX x 3/4" PEX	10	100
Q4751551	ProPEX EP Reducing Tee, 1 1/2" PEX x 1 1/2" PEX x 1" PEX	10	100
Q4751553	ProPEX EP Reducing Tee, 1 1/2" PEX x 1 1/2" PEX x 1 1/4" PEX	10	100
NEW Q4752051	ProPEX EP Reducing Tee, 2" PEX x 1 1/2" PEX x 1" PEX	5	-
NEW Q4752210	ProPEX EP Reducing Tee, 2" PEX x 2" PEX x 1" PEX	5	-
NEW Q4752215	ProPEX EP Reducing Tee, 2" PEX x 2" PEX x 1 1/2" PEX	5	-
NEW Q4752275	ProPEX EP Reducing Tee, 2" PEX x 2" PEX x 3/4" PEX	5	-

ProPEX EP Plug temporarily or permanently terminates the end of Uponor AquaPEX tubing.

ProPEX EP Plug

Note: ProPEX tool is required. ProPEX Rings sold separately.



Part No.	Part Description	Pkg. Qty.	Case Qty.
Q4350500	ProPEX EP Plug for 1/2" PEX	25	100
Q4350750	ProPEX EP Plug for 3/4" PEX	25	100
Q4351000	ProPEX EP Plug for 1" PEX	10	100
Q4351250	ProPEX EP Plug for 1 1/4" PEX	10	100
Q4351500	ProPEX EP Plug for 1 1/2" PEX	10	100
Q4352000	ProPEX EP Plug for 2" PEX	5	50

Uponor Plumbing Systems

ProPEX EP Swivel Closet Adapter



ProPEX EP Swivel Closet Adapter (with plastic nut) connects $\frac{3}{8}$ " or $\frac{1}{2}$ " Uponor AquaPEX tubing to water closet.

Note: ProPEX Tool is required. ProPEX Rings sold separately.

Part No.	Part Description	Pkg. Qty.	Case Qty.
Q4340500	ProPEX EP Swivel Closet Adapter, $\frac{1}{2}$ " PEX x $\frac{7}{8}$ " Ballcock	25	100

ProPEX EP Swivel Faucet Adapter



ProPEX EP Swivel Faucet Adapter (with plastic nut) connects $\frac{1}{2}$ " Uponor AquaPEX tubing to male NPSM faucet connections.

Note: ProPEX Tool is required. ProPEX Rings sold separately.

Part No.	Part Description	Pkg. Qty.	Case Qty.
Q4360500	ProPEX EP Swivel Faucet Adapter, $\frac{1}{2}$ " PEX x $\frac{1}{2}$ " NPSM	25	100

EP Valves

ProPEX EP Angle Stop Valve



ProPEX EP valves feature the proven performance of engineered plastic and the durability and precision of ceramics. They resist chemical and mineral buildup, along with corrosion, pitting and scaling. They are used for PEX-to-PEX and point-of-use shutoff at the fixture. The Angle Stop Valve is configured for $\frac{1}{2}$ " Uponor AquaPEX tubing.

Part No.	Part Description	Pkg. Qty.	Case Qty.
Q4905038	ProPEX EP Angle Stop Valve for $\frac{1}{2}$ " PEX	10	100

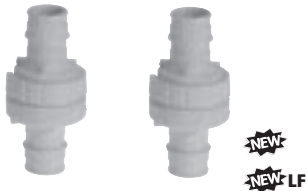
ProPEX Straight Stop Valve



ProPEX EP valves feature the proven performance of engineered plastic and the durability and precision of ceramics. They resist chemical and mineral buildup, along with corrosion, pitting and scaling. They are used for PEX-to-PEX and point-of-use shutoff at the fixture. The Straight Stop Valve is configured for $\frac{1}{2}$ " Uponor AquaPEX tubing.

Part No.	Part Description	Pkg. Qty.	Case Qty.
Q4935038	ProPEX Straight Stop Valve for $\frac{1}{2}$ " PEX	10	100

ProPEX EP In-line Valve



ProPEX EP valves feature the proven performance of engineered plastic and the durability and precision of ceramics. They resist chemical and mineral buildup, along with corrosion, pitting and scaling. They are used for PEX-to-PEX and point-of-use shutoff at the fixture. The in-line valve is configured for $\frac{1}{2}$ " and $\frac{3}{4}$ " Uponor AquaPEX tubing.

Part No.	Part Description	Pkg. Qty.	Case Qty.
Q4905050	ProPEX EP In-line Valve, $\frac{1}{2}$ " PEX x $\frac{1}{2}$ " PEX	10	100
Q4837575	ProPEX EP In-line Valve, $\frac{3}{4}$ " PEX x $\frac{3}{4}$ " PEX	10	100

LF Lead-free alternative available in lead-free section.

ProPEX Lead-free Brass Transition Fittings

ProPEX lead-free LF fittings are designed to meet the demands of the Safe Drinking Water Act of the United States. These lead-free transition fittings, when combined with Uponor's extensive EP offering and out-of-the-wall systems, offer peace of mind from the inlet to the faucet.

ProPEX LF Brass Male Threaded Adapter connects Uponor AquaPEX tubing to male NPT threads and is intended as transition fittings from metal to PEX.

Note: ProPEX Tool is required. ProPEX Rings sold separately.

ProPEX LF Brass Male Threaded Adapter



	Part No.	Part Description	Pkg. Qty.	Case Qty.
NEW	LF4525050	ProPEX LF Brass Male Threaded Adapter, 1/2" PEX x 1/2" NPT	25	100
NEW	LF4527575	ProPEX LF Brass Male Threaded Adapter, 3/4" PEX x 3/4" NPT	25	100
NEW	LF4521010	ProPEX LF Brass Male Threaded Adapter, 1" PEX x 1" NPT	10	100
NEW	LF4521313	ProPEX LF Brass Male Threaded Adapter, 1 1/4" PEX x 1 1/4" NPT	10	-

ProPEX LF Brass Female Threaded Adapter connects Uponor AquaPEX tubing to female NPT threads and is intended as transition fittings from metal to PEX.

Note: ProPEX Tool is required. ProPEX Rings sold separately.

ProPEX LF Brass Female Threaded Adapter



	Part No.	Part Description	Pkg. Qty.	Case Qty.
NEW	LF4575050	ProPEX LF Brass Female Threaded Adapter, 1/2" PEX x 1/2" NPT	25	100
NEW	LF4577575	ProPEX LF Brass Female Threaded Adapter, 3/4" PEX x 3/4" NPT	25	100
NEW	LF4571010	ProPEX LF Brass Female Threaded Adapter, 1" PEX x 1" NPT	10	100
NEW	LF4571313	ProPEX LF Brass Female Threaded Adapter, 1 1/4" PEX x 1 1/4" NPT	10	-

ProPEX LF Brass Sweat Adapter transitions Uponor AquaPEX tubing to copper pipe.

Note: ProPEX Tool is required. ProPEX Rings sold separately.

ProPEX LF Brass Sweat Adapter



	Part No.	Part Description	Pkg. Qty.	Case Qty.
NEW	LF4515050	ProPEX LF Brass Adapter, 1/2" PEX x 1/2" Copper	25	100
NEW	LF4515075	ProPEX LF Brass Sweat Adapter, 1/2" PEX x 3/4" Copper	25	100
NEW	LF4517575	ProPEX LF Brass Adapter, 3/4" PEX x 3/4" Copper	25	100
NEW	LF4511010	ProPEX LF Brass Sweat Adapter, 1" PEX x 1" Copper	10	100
NEW	LF4511313	ProPEX LF Brass Sweat Adapter, 1 1/4" PEX x 1 1/4" Copper	10	-

ProPEX LF Brass Fitting Adapter transitions Uponor AquaPEX tubing to copper fittings.

Note: ProPEX Tool is required. ProPEX Rings sold separately.

ProPEX LF Brass Fitting Adapter



	Part No.	Part Description	Pkg. Qty.	Case Qty.
NEW	LF4505050	ProPEX LF Brass Fitting Adapter, 1/2" PEX x 1/2" Copper	25	100
NEW	LF4505075	ProPEX LF Brass Fitting Adapter, 1/2" PEX x 3/4" Copper	25	100
NEW	LF4507575	ProPEX LF Brass Fitting Adapter, 3/4" PEX x 3/4" Copper	25	100
NEW	LF4501010	ProPEX LF Brass Fitting Adapter, 1" PEX x 1" Copper	10	100
NEW	LF4501313	ProPEX LF Brass Fitting Adapter, 1 1/4" PEX x 1 1/4" Copper	10	-

Uponor Plumbing Systems

Compression LF Brass Stop Valve



Compression LF Brass quarter-turn Stop Valve is chrome-plated and available in angle or straight configurations. Stop valves are used for point-of-use shutoff at the fixture. Both styles connect 1/2" Uponor AquaPEX tubing to 3/8" o.d. risers.

Note: Compression inserts and rings for the 3/8" riser connections are included. ProPEX Tool is required. ProPEX Rings sold separately.

Part No.	Part Description	Pkg. Qty.	Case Qty.
LF4410500	LF Brass Compression Angle Stop Valve for 1/2" PEX	10	100
LF4420500	LF Brass Compression Straight Stop Valve for 1/2" PEX	10	100

ProPEX Full-port LF Brass Stop Valve



ProPEX Full-port LF Brass quarter-turn Stop Valve is chrome-plated and available in angle or straight configurations. Stop valves are used for point-of-use shutoff at the fixture. Both styles connect 1/2" Uponor AquaPEX tubing to 3/8" o.d. risers.

Note: ProPEX Tool is required. ProPEX Rings sold separately.

Part No.	Part Description	Pkg. Qty.	Case Qty.
LF4855038	ProPEX LF Full Port Angle Stop Valve for 1/2" PEX	10	100
LF4865038	ProPEX LF Full Port Straight Stop Valve for 1/2" PEX	10	100

ProPEX to Copper LF Brass Valve

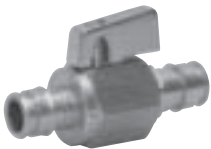


ProPEX to Copper LF Brass quarter-turn Ball Valves feature a shutoff valve for 1/2" Uponor AquaPEX tubing to copper pipe.

Note: ProPEX Tool is required. ProPEX Rings sold separately.

Part No.	Part Description	Pkg. Qty.	Case Qty.
LF4805050	ProPEX LF Ball Valve (large bore), 1/2" ProPEX x 1/2" Copper Adapter	10	100

ProPEX to ProPEX LF Brass Valve



ProPEX to ProPEX LF Brass quarter-turn Ball Valve is intended as an in-line shutoff valve for 1/2", 3/4" and 1" Uponor AquaPEX. These valves are not compatible with applications using glycol.

Note: ProPEX Tool is required. ProPEX Rings sold separately.

Part No.	Part Description	Pkg. Qty.	Case Qty.
LF4817575	ProPEX LF Ball Valve (large bore), 3/4" PEX x 3/4" PEX	10	100
LF4827575	ProPEX LF Ball Valve (full port), 3/4" PEX x 3/4" PEX	10	100
LF4821010	ProPEX LF Ball Valve (full port), 1" PEX x 1" PEX	10	100

ProPEX to MIP LF Brass Valve



ProPEX to MIP LF Brass quarter-turn Ball Valve features a shutoff valve between 1/2" Uponor AquaPEX and 1/2" MIP.

Note: ProPEX Tool is required. ProPEX Rings sold separately.

Part No.	Part Description	Pkg. Qty.	Case Qty.
LF4795050	ProPEX LF Ball Valve, 1/2" PEX x 1/2" MIP	10	100

ProPEX LF Brass Elbow



ProPEX LF Drop Ear Brass Elbow provides rigid 90-degree connections and the ability to secure Uponor AquaPEX tubing. ProPEX LF Brass Elbow with MIP makes 90-degree connections for 1/2" Uponor AquaPEX tubing to 1/2" male NPT thread.

Note: ProPEX Tool is required. ProPEX Rings sold separately.

Part No.	Part Description	Pkg. Qty.	Case Qty.
LF4235050	ProPEX LF Drop Ear Brass Elbow, 1/2" PEX x 1/2" FIP	25	100
LF4125050	ProPEX LF Brass Elbow, 1/2" PEX x 1/2" MIP	25	100

Uponor Plumbing Systems

ProPEX LF Copper Tub Ell provides a 90-degree transition from tub and shower valves to Uponor AquaPEX tubing.

ProPEX LF Copper Tub Ell

Note: ProPEX Tool is required. ProPEX Rings sold separately.



Part No.	Part Description	Pkg. Qty.	Case Qty.
NEW LF2885050	ProPEX LF Copper Tub Ell, 1/2" PEX LF Brass x 1/2" Copper (3 1/2" x 4")	25	100

ProPEX LF Copper Stub Ell provides a 90-degree transition from Uponor AquaPEX tubing to copper or 1/2" compression valves.

ProPEX LF Copper Stub Ell

Note: ProPEX Tool is required. ProPEX Rings sold separately.



Part No.	Part Description	Pkg. Qty.	Case Qty.
NEW LF2865050	ProPEX LF Copper Stub Ell, 1/2" PEX LF Brass x 1/2" Copper (3 1/2" x 8")	25	100

ProPEX Washing Machine Outlet Box comes with two 1/2" LF brass ProPEX color-coded hot and cold valves. The versatility of the box allows the installer the freedom to mount the box with the valves either on the top or bottom. The four support brackets make mounting the box quick and easy. The included snap-on cover plate accommodates up to 1" drywall.

ProPEX LF Washing Machine Outlet Box

Note: ProPEX Tool is required. ProPEX Rings sold separately.



Part No.	Part Description	Pkg. Qty.	Case Qty.
NEW LF5930500	ProPEX Washing Machine Outlet Box, 1/2" LF Brass Valves	12	-

ProPEX Ice Maker Outlet Box comes with one 1/2" LF Brass ProPEX valve. The valve has a 1/4" o.d. compression connection for connecting to standard ice maker tubing. The two support brackets make mounting the box quick and easy. The included snap-on cover plate accommodates up to 1" drywall.

ProPEX LF Ice Maker Box

Note: ProPEX Tool is required. ProPEX Rings sold separately.



Part No.	Part Description	Pkg. Qty.	Case Qty.
NEW LF5955025	ProPEX Ice Maker Box with Support Brackets, 1/2" LF Brass Valves	12	-

ProPEX Brass Fittings

ProPEX Brass Coupling makes PEX-to-PEX connections.

ProPEX Brass Coupling

Note: ProPEX Tool is required. ProPEX Rings sold separately.



Part No.	Part Description	Pkg. Qty.	Case Qty.
* Q4545050	ProPEX Brass Coupling, 1/2" PEX x 1/2" PEX	25	100
* Q4545075	ProPEX Brass Coupling, 1/2" PEX x 3/4" PEX	25	100
* Q4547575	ProPEX Brass Coupling, 3/4" PEX x 3/4" PEX	25	100
* Q4547510	ProPEX Brass Coupling, 3/4" PEX x 1" PEX	10	100
* Q4541010	ProPEX Brass Coupling, 1" PEX x 1" PEX	10	100
Q4542015	ProPEX Brass Coupling, 2" PEX x 1 1/2" PEX	5	-
* Q4542020	ProPEX Brass Coupling, 2" PEX x 2" PEX	5	-

* Engineered plastic alternate available in EP section.

Uponor Plumbing Systems

ProPEX Brass to Polyethylene (PE) Coupling



ProPEX Brass to Polyethylene (PE) Coupling transitions black PE tubing to Uponor AquaPEX tubing. Product does not include hose clamps for the PE side of the coupling.

Note: ProPEX Tool is required. ProPEX Rings sold separately.

Part No.	Part Description	Pkg. Qty.	Case Qty.
Q4591010	ProPEX Brass to PE Coupling, 1" PEX x 1" PE	10	100

ProPEX Brass to Polybutylene (PB) Coupling



ProPEX Brass to Polybutylene (PB) Coupling transitions PB tubing to Uponor AquaPEX tubing. Product does not include the crimp ring for the PB side of the coupling.

Note: ProPEX Tool is required. ProPEX Rings sold separately.

Part No.	Part Description	Pkg. Qty.	Case Qty.
Q4585050	ProPEX Brass to PB Coupling, 1/2" PEX x 1/2" PB	25	100
Q4587575	ProPEX Brass to PB Coupling, 3/4" PEX x 3/4" PB	25	100

ProPEX Brass Elbow



ProPEX Brass Elbow makes tight 90-degree connections for Uponor AquaPEX tubing in supply and return mains.

Note: ProPEX Tool is required. ProPEX Rings sold separately.

Part No.	Part Description	Pkg. Qty.	Case Qty.
* Q4710500	ProPEX Brass Elbow, 1/2" PEX x 1/2" PEX	25	100
* Q4710750	ProPEX Brass Elbow, 3/4" PEX x 3/4" PEX	25	100
* Q4711000	ProPEX Brass Elbow, 1" PEX x 1" PEX	10	100
* Q4712000	ProPEX Brass Elbow, 2" PEX x 2" PEX	5	-

ProPEX Drop Ear Brass Elbow

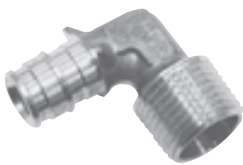


ProPEX Drop Ear Brass Elbow provides rigid 90-degree connections and the ability to secure Uponor AquaPEX tubing.

Note: ProPEX Tool is required. ProPEX Rings sold separately.

Part No.	Part Description	Pkg. Qty.	Case Qty.
LF ◀ Q4235050	ProPEX Drop Ear Brass Elbow, 1/2" PEX x 1/2" FIP	25	100

ProPEX Brass Elbow with MIP



ProPEX Brass Elbow with MIP makes 90-degree connections for 1/2" Uponor AquaPEX tubing to 1/2" male NPT thread.

Note: ProPEX Tool is required. ProPEX Rings sold separately.

Part No.	Part Description	Pkg. Qty.	Case Qty.
LF ◀ Q4125050	ProPEX Brass Elbow, 1/2" PEX x 1/2" MIP	25	100
Q4730500	ProPEX Brass Elbow, 1/2" PEX x 1/2" Male CU	25	100
Q4740500	ProPEX Brass Elbow, 1/2" PEX x 1/2" MIP/Female CU	25	100
Q4743850	ProPEX Brass Elbow, 1/2" PEX x 3/8" MIP	25	100

LF Lead-free alternative available in lead-free section.

* Engineered plastic alternate available in EP section.

◀ Discontinued item; available while quantities last. Please contact Uponor Customer Service for availability. All sales are final.

Uponor Plumbing Systems

ProPEX Brass Tee makes diverting connections for Uponor AquaPEX tubing in supply and return mains. Branch size is listed last in the part description.

Note: ProPEX Tool is required. ProPEX Rings sold separately.

Part No.	Part Description	Pkg. Qty.	Case Qty.
* Q4705050	ProPEX Brass Tee, 1/2" PEX x 1/2" PEX x 1/2" PEX	25	100
* Q4707575	ProPEX Brass Tee, 3/4" PEX x 3/4" PEX x 3/4" PEX	25	100
* Q4701010	ProPEX Brass Tee, 1" PEX x 1" PEX x 1" PEX	10	100
* Q4702000	ProPEX Brass Tee, 2" PEX x 2" PEX x 2" PEX	5	5

ProPEX Brass Tee



ProPEX Brass Reducing Tee makes diverting connections for Uponor AquaPEX tubing in supply and return mains. Branch size is listed last in the part description.

Note: ProPEX Tool is required. ProPEX Rings sold separately.

Part No.	Part Description	Pkg. Qty.	Case Qty.
* Q4705575	ProPEX Brass Reducing Tee, 1/2" PEX x 1/2" PEX x 3/4" PEX	25	100
* Q4707555	ProPEX Brass Reducing Tee, 3/4" PEX x 1/2" PEX x 1/2" PEX	25	100
* Q4707557	ProPEX Brass Reducing Tee, 3/4" PEX x 1/2" PEX x 3/4" PEX	25	100
* Q4707550	ProPEX Brass Reducing Tee, 3/4" PEX x 3/4" PEX x 1/2" PEX	25	100
* Q4707710	ProPEX Brass Reducing Tee, 3/4" PEX x 3/4" PEX x 1" PEX	10	100
* Q4701775	ProPEX Brass Reducing Tee, 1" PEX x 3/4" PEX x 3/4" PEX	10	100
* Q4701751	ProPEX Brass Reducing Tee, 1" PEX x 3/4" PEX x 1" PEX	10	100
* Q4701150	ProPEX Brass Reducing Tee, 1" PEX x 1" PEX x 1/2" PEX	10	100
* Q4701175	ProPEX Brass Reducing Tee, 1" PEX x 1" PEX x 3/4" PEX	10	100
* Q4702575	ProPEX Brass Reducing Tee, 2" PEX x 1 1/2" PEX x 3/4" PEX	5	-
* Q4702051	ProPEX Brass Reducing Tee, 2" PEX x 1 1/2" PEX x 1" PEX	5	-
* Q4702053	ProPEX Brass Reducing Tee, 2" PEX x 1 1/2" PEX x 1 1/4" PEX	5	-
* Q4702055	ProPEX Brass Reducing Tee, 2" PEX x 1 1/2" PEX x 1 1/2" PEX	5	-
* Q4702275	ProPEX Brass Reducing Tee, 2" PEX x 2" PEX x 3/4" PEX	5	-
* Q4702210	ProPEX Brass Reducing Tee, 2" PEX x 2" PEX x 1" PEX	5	-
* Q4702213	ProPEX Brass Reducing Tee, 2" PEX x 2" PEX x 1 1/4" PEX	5	-
* Q4702215	ProPEX Brass Reducing Tee, 2" PEX x 2" PEX x 1 1/2" PEX	5	-

ProPEX Brass Reducing Tee

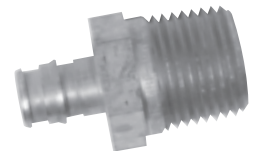


ProPEX Brass Male Threaded Adapter connects Uponor AquaPEX tubing to male NPT threads and are intended as transition fittings from metal to PEX.

Note: ProPEX tool is required. ProPEX Rings sold separately.

	Part No.	Part Description	Pkg. Qty.	Case Qty.
LF ◀	Q4525050	ProPEX Brass Male Threaded Adapter, 1/2" PEX x 1/2" NPT	25	100
	Q4525075	ProPEX Brass Male Threaded Adapter, 1/2" PEX x 3/4" NPT	25	100
LF ◀	Q4527575	ProPEX Brass Male Threaded Adapter, 3/4" PEX x 3/4" NPT	25	100
	Q4527510	ProPEX Brass Male Threaded Adapter, 3/4" PEX x 1" NPT	10	100
	Q4521075	ProPEX Brass Male Threaded Adapter, 1" PEX x 3/4" NPT	10	100
LF ◀	Q4521010	ProPEX Brass Male Threaded Adapter, 1" PEX x 1" NPT	10	100
	Q4522020	ProPEX Brass Male Threaded Adapter, 2" PEX x 2" NPT	5	-

ProPEX Brass Male Threaded Adapter



LF Lead-free alternative available in lead-free section.

* Engineered plastic alternate available in EP section.

◀ Discontinued item; available while quantities last. Please contact Uponor Customer Service for availability. All sales are final.

Uponor Plumbing Systems

ProPEX Brass Female Threaded Adapter

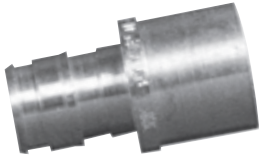


ProPEX Brass Female Threaded Adapter connects Uponor AquaPEX tubing to female NPT threads and are intended as transition fittings from metal to PEX.

Note: ProPEX Tool is required. ProPEX Rings sold separately.

	Part No.	Part Description	Pkg. Qty.	Case Qty.
LF ◀	Q4575050	ProPEX Brass Female Threaded Adapter, 1/2" PEX x 1/2" NPT	25	100
	Q4575075	ProPEX Brass Female Threaded Adapter, 1/2" PEX x 3/4" NPT	25	100
LF ◀	Q4577575	ProPEX Brass Female Threaded Adapter, 3/4" PEX x 3/4" NPT	25	100
	Q4577510	ProPEX Brass Female Threaded Adapter, 3/4" PEX x 1" NPT	10	100
	Q4571075	ProPEX Brass Female Threaded Adapter, 1" PEX x 3/4" NPT	10	100
◀	Q4571010	ProPEX Brass Female Threaded Adapter, 1" PEX x 1" NPT	10	100
	Q4572020	ProPEX Brass Female Threaded Adapter, 2" PEX x 2" NPT	5	-

ProPEX Brass Sweat Adapter



ProPEX Brass Sweat Adapter transitions Uponor AquaPEX tubing to copper pipe.

Note: ProPEX Tool is required. ProPEX Rings sold separately.

	Part No.	Part Description	Pkg. Qty.	Case Qty.
LF ◀	Q4515050	ProPEX Brass Sweat Adapter, 1/2" PEX x 1/2" Copper	25	100
LF ◀	Q4515075	ProPEX Brass Sweat Adapter, 1/2" PEX x 3/4" Copper	25	100
	Q4517550	ProPEX Brass Sweat Adapter, 3/4" PEX x 1/2" Copper	25	100
LF ◀	Q4517575	ProPEX Brass Sweat Adapter, 3/4" PEX x 3/4" Copper	25	100
	Q4517510	ProPEX Brass Sweat Adapter, 3/4" PEX x 1" Copper	10	100
LF ◀	Q4511010	ProPEX Brass Sweat Adapter, 1" PEX x 1" Copper	10	100
	Q4512020	ProPEX Brass Sweat Adapter, 2" PEX x 2" Copper	5	-

ProPEX Brass Fitting Adapter



ProPEX Brass Fitting Adapter transitions Uponor AquaPEX tubing to copper fittings.

Note: ProPEX Tool is required. ProPEX Rings sold separately.

	Part No.	Part Description	Pkg. Qty.	Case Qty.
LF ◀	Q4505050	ProPEX Brass Fitting Adapter, 1/2" PEX x 1/2" Copper	25	100
LF ◀	Q4505075	ProPEX Brass Fitting Adapter, 1/2" PEX x 3/4" Copper	25	100
	Q4507550	ProPEX Brass Fitting Adapter, 3/4" PEX x 1/2" Copper	25	100
LF ◀	Q4507575	ProPEX Brass Fitting Adapter, 3/4" PEX x 3/4" Copper	25	100
	Q4507510	ProPEX Brass Fitting Adapter, 3/4" PEX x 1" Copper	10	100
LF ◀	Q4501010	ProPEX Brass Fitting Adapter, 1" PEX x 1" Copper	10	100
	Q4502020	ProPEX Brass Fitting Adapter, 2" PEX x 2" Copper	5	-

LF Lead-free alternative available in lead-free section.

◀ Discontinued item; available while quantities last. Please contact Uponor Customer Service for availability. All sales are final.

Uponor Plumbing Systems

ProPEX Brass Plug temporarily or permanently terminates the end of Uponor AquaPEX tubing.

Note: ProPEX Tool is required. ProPEX Rings sold separately.

ProPEX Brass Plug

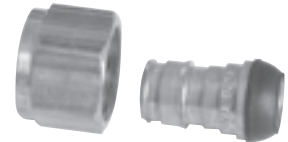


Part No.	Part Description	Pkg. Qty.	Case Qty.
* Q4535050	ProPEX Brass Plug for 1/2" PEX	25	100
* Q4537575	ProPEX Brass Plug for 3/4" PEX	25	100
* Q4531000	ProPEX Brass Plug for 1" PEX	10	100
* Q4532000	ProPEX Brass Plug for 2" PEX	5	-

ProPEX Brass Swivel Faucet Adapter connects 3/8" or 1/2" Uponor AquaPEX tubing to male NPSM faucet connections.

Note: ProPEX Tool is required. ProPEX Rings sold separately.

ProPEX Brass Swivel Faucet Adapter

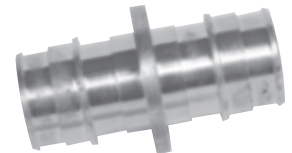


Part No.	Part Description	Pkg. Qty.	Case Qty.
* Q4655050	ProPEX Brass Swivel Faucet Adapter, 1/2" PEX x 1/2" NPSM	25	100
Q4651000Z	1/2" Washer Nose Cone	10	-

ProPEX DZR Brass Coupling makes PEX-to-PEX connections. DZR fittings are safe for direct burial in soil.

Note: ProPEX Tool is required. ProPEX Rings sold separately.

ProPEX DZR Brass Coupling



Part No.	Part Description	Each Qty.	Pkg. Qty.
* G4547575	ProPEX DZR Brass Coupling, 3/4" PEX x 3/4" PEX	-	10
* G4541010	ProPEX DZR Brass Coupling, 1" PEX x 1" PEX	-	10
* G4541307	ProPEX DZR Brass Coupling, 1 1/4" PEX x 3/4" PEX	-	10
* G4541310	ProPEX DZR Brass Coupling, 1 1/4" PEX x 1" PEX	-	10
* G4541313	ProPEX DZR Brass Coupling, 1 1/4" PEX x 1 1/4" PEX	-	10
* G4541507	ProPEX DZR Brass Coupling, 1 1/2" PEX x 3/4" PEX	-	10
* G4541510	ProPEX DZR Brass Coupling, 1 1/2" PEX x 1" PEX	-	10
* G4541513	ProPEX DZR Brass Coupling, 1 1/2" PEX x 1 1/4" PEX	-	10
* G4541515	ProPEX DZR Brass Coupling, 1 1/2" PEX x 1 1/2" PEX	-	10
* G4542020	ProPEX DZR Brass Coupling, 2" PEX x 2" PEX	-	5

ProPEX DZR Brass Elbow makes tight 90-degree connections for Uponor AquaPEX tubing in supply and return mains. DZR brass is safe for direct burial in soil.

Note: ProPEX Tool is required. ProPEX Rings sold separately.

ProPEX DZR Brass Elbow



Part No.	Part Description	Each Qty.	Pkg. Qty.
* G4711250	ProPEX DZR Brass Elbow, 1 1/4" PEX x 1 1/4" PEX EP	-	10
* G4711500	ProPEX DZR Brass Elbow, 1 1/2" PEX x 1 1/2" PEX EP	-	10

* Engineered plastic alternate available in EP section.

◀ Discontinued item; available while quantities last. Please contact Uponor Customer Service for availability. All sales are final.

Uponor Plumbing Systems

ProPEX DZR Brass Tee



ProPEX DZR Brass Tee makes diverting connections for Uponor AquaPEX tubing in supply and return mains. Branch size is listed last in the part description. DZR brass is safe for direct burial in soil.

Note: ProPEX Tool is required. ProPEX Rings sold separately.

Part No.	Part Description	Each Qty.	Pkg. Qty.
* G4701250	ProPEX DZR Brass Tee, 1¼" PEX x 1¼" PEX x 1¼" PEX	-	10
* G4701500	ProPEX DZR Brass Tee, 1½" PEX x 1½" PEX x 1½" PEX	-	10

ProPEX DZR Brass Reducing Tee

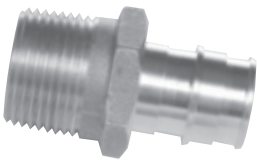


ProPEX DZR Brass Reducing Tee makes diverting connections for Uponor AquaPEX tubing in supply and return mains. Branch size is listed last in the part description. DZR Brass Fittings are safe for direct burial in soil.

Note: ProPEX Tool is required. ProPEX Rings sold separately.

Part No.	Part Description	Each Qty.	Pkg. Qty.
* G4701317	ProPEX DZR Brass Reducing Tee, 1¼" PEX x 1" PEX x ¾" PEX	-	10
* G4701311	ProPEX DZR Brass Reducing Tee, 1¼" PEX x 1" PEX x 1" PEX	-	10
* G4701337	ProPEX DZR Brass Reducing Tee, 1¼" PEX x 1¼" PEX x ¾" PEX	-	10
* G4701331	ProPEX DZR Brass Reducing Tee, 1¼" PEX x 1¼" PEX x 1" PEX	-	10
* G4701537	ProPEX DZR Brass Reducing Tee, 1½" PEX x 1¼" PEX x ¾" PEX	-	10
* G4701531	ProPEX DZR Brass Reducing Tee, 1½" PEX x 1¼" PEX x 1" PEX	-	10
* G4701533	ProPEX DZR Brass Reducing Tee, 1½" PEX x 1¼" PEX x 1¼" PEX	-	10
* G4701557	ProPEX DZR Brass Reducing Tee, 1½" PEX x 1½" PEX x ¾" PEX	-	10
* G4701551	ProPEX DZR Brass Reducing Tee, 1½" PEX x 1½" PEX x 1" PEX	-	10
* G4701553	ProPEX DZR Brass Reducing Tee, 1½" PEX x 1½" PEX x 1¼" PEX	-	10

ProPEX DZR Brass Male Threaded Adapter



ProPEX DZR Brass Male Threaded Adapter connects Uponor AquaPEX tubing to male NPT threads and are intended as transition fittings from metal to PEX. DZR Brass Fittings are safe for direct burial in soil.

Note: ProPEX Tool is required. ProPEX Rings sold separately.

Part No.	Part Description	Each Qty.	Pkg. Qty.
LF * G4527575	ProPEX DZR Brass Male Threaded Adapter, ¾" PEX x ¾" NPT	-	10
LF * G4521010	ProPEX DZR Brass Male Threaded Adapter, 1" PEX x 1" NPT	-	10
LF * G4521313	ProPEX DZR Brass Male Threaded Adapter, 1¼" PEX x 1¼" NPT	-	10
G4521515	ProPEX DZR Brass Male Threaded Adapter, 1½" PEX x 1½" NPT	-	10
G4522020	ProPEX DZR Brass Male Threaded Adapter, 2" PEX x 2" NPT	-	5

LF Lead-free alternative available in lead-free section.

* Engineered plastic alternate available in EP section.

◀ Discontinued item; available while quantities last. Please contact Uponor Customer Service for availability. All sales are final.

Uponor Plumbing Systems

ProPEX DZR Brass Female Threaded Adapters connect Uponor AquaPEX tubing to female NPT threads and are intended as transition fittings from metal to PEX. DZR Brass Fittings are safe for direct burial in soil.

Note: ProPEX Tool is required. ProPEX Rings sold separately.

ProPEX DZR Brass Female Threaded Adapter



Part No.	Part Description	Each Qty.	Pkg. Qty.
LF ◀ G4571313	ProPEX DZR Brass Female Threaded Adapter, 1¼" PEX x 1¼" NPT	-	10
◀ G4571515	ProPEX DZR Brass Female Threaded Adapter, 1½" PEX x 1½" NPT	-	10

ProPEX DZR Brass Sweat Adapter transitions Uponor AquaPEX tubing to copper pipe. DZR Brass Fittings are safe for direct burial in the soil.

Note: ProPEX Tool is required. ProPEX Rings sold separately.

ProPEX DZR Brass Sweat Adapter

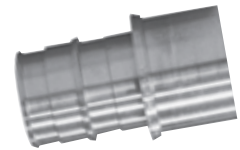


Part No.	Part Description	Each Qty.	Pkg. Qty.
LF ◀ G4511313	ProPEX DZR Brass Sweat Adapter, 1¼" PEX x 1¼" Copper	-	10
◀ G4511515	ProPEX DZR Brass Sweat Adapter, 1½" PEX x 1½" Copper	-	10

ProPEX DZR Brass Fitting Adapter transitions Uponor AquaPEX tubing to copper fittings. DZR Brass Fittings are safe for direct burial in soil.

Note: ProPEX Tool is required. ProPEX Rings sold separately.

ProPEX DZR Brass Fitting Adapter



Part No.	Part Description	Each Qty.	Pkg. Qty.
LF ◀ G4501313	ProPEX DZR Brass Fitting Adapter, 1¼" PEX x 1¼" Copper	-	10
◀ G4501515	ProPEX DZR Brass Fitting Adapter, 1½" PEX x 1½" Copper	-	10

ProPEX Stainless Steel Male Threaded Adapter transitions Uponor AquaPEX tubing to reverse osmosis units. Due to the aggressive nature of conditioned water, produced by reverse osmosis, de-ionization and distillation, fittings are manufactured from 316 stainless steel, and fully comply with CSA B137.5.

Note: ProPEX Tool is required. ProPEX Rings sold separately.

ProPEX Stainless Steel Male Threaded Adapter



Part No.	Part Description	Pkg. Qty.	Case Qty.
Q8525050	ProPEX Stainless Steel Male Threaded Adapter, ½" PEX x ½" NPT	25	100
Q8527575	ProPEX Stainless Steel Male Threaded Adapter, ¾" PEX x ¾" NPT	25	100
Q8521010	ProPEX Stainless Steel Male Threaded Adapter, 1" PEX x 1" NPT	10	100

ProPEX Red Brass Male Threaded Adapter connects Uponor AquaPEX tubing to male NPT threads and are intended as transition fittings from metal to PEX. Red brass is highly resistant to the effects of aggressive water conditions. Red brass fittings are safe for direct burial in soil in accordance with Uponor installation guidelines.

Note: ProPEX Tool is required. ProPEX Rings sold separately.

ProPEX Red Brass Male Threaded Adapter



Part No.	Part Description	Pkg. Qty.	Case Qty.
LF V4525050	ProPEX Red Brass Male Threaded Adapter, ½" PEX x ½" NPT	25	100
LF V4527575	ProPEX Red Brass Male Threaded Adapter, ¾" PEX x ¾" NPT	25	100

LF Lead-free alternative available in lead-free section.

◀ Discontinued item; available while quantities last. Please contact Uponor Customer Service for availability. All sales are final.

Uponor Plumbing Systems

ProPEX Red Brass Sweat Adapter



ProPEX Red Brass Sweat Adapter transitions Uponor AquaPEX tubing to copper pipe, and is highly resistant to the effects of aggressive water conditions. Red brass fittings are safe for direct burial in soil in accordance with Uponor installation guidelines.

Note: ProPEX Tool is required. ProPEX Rings sold separately.

	Part No.	Part Description	Pkg. Qty.	Case Qty.
LF	V4515050	ProPEX Red Brass Sweat Adapter, 1/2" PEX x 1/2" Copper	25	100
LF	V4517575	ProPEX Red Brass Sweat Adapter, 3/4" PEX x 3/4" Copper	25	100
LF	V4511010	ProPEX Red Brass Sweat Adapter, 1" PEX x 1" Copper	10	100
LF	V4511313	ProPEX Red Brass Sweat Adapter, 1 1/4" PEX x 1 1/4" Copper	10	-
	V4511515	ProPEX Red Brass Sweat Adapter, 1 1/2" PEX x 1 1/2" Copper	10	-

ProPEX Red Brass Fitting Adapter



ProPEX Red Brass Fitting Adapter connects Uponor AquaPEX tubing to copper fittings. Red brass is highly resistant to the effects of aggressive water conditions. Red brass fittings are safe for direct burial in soil in accordance with Uponor installation guidelines.

Note: ProPEX Tool is required. ProPEX Rings sold separately.

	Part No.	Part Description	Pkg. Qty.	Case Qty.
LF	V4505050	ProPEX Red Brass Fitting Adapter, 1/2" PEX x 1/2" Copper	25	100
LF	V4507575	ProPEX Red Brass Fitting Adapter, 3/4" PEX x 3/4" Copper	25	100

Brass Compression Stop Valve Accessories



Brass Compression Stop Valve is chrome-plated and available in angle or straight stop configurations. Stop valves are used for point-of-use shutoff at the fixture. Both valve styles connect 1/2" Uponor AquaPEX tubing to 3/8" o.d. risers.

Note: Compression inserts and rings are included. Only use stainless steel inserts supplied by Uponor with these compression stop valves. Substitution can result in valve connection failure.

	Part No.	Part Description	Pkg. Qty.	Case Qty.
	F5400500	1/2" Insert (stainless steel)	10	100

ProPEX Full-port Brass Stop Valve



ProPEX Full-port quarter-turn Stop Valve is chrome-plated and available in either angle or straight stop configurations. Stop valve is used for point-of-use shutoff at the fixture. Both valve styles connect 1/2" Uponor AquaPEX tubing to 3/8" o.d. risers.

Note: Compression inserts and rings for the 3/8" riser connections are included with the valves. ProPEX Tool is required. ProPEX Rings sold separately.

	Part No.	Part Description	Pkg. Qty.	Case Qty.
LF ◀ *	Q4855038	ProPEX Full-port Angle Stop Valve for 1/2" PEX	10	100
LF ◀ *	Q4865038	ProPEX Full-port Straight Stop Valve for 1/2" PEX	10	100

LF Lead-free alternative available in lead-free section.

* Engineered plastic alternate available in EP section.

◀ Discontinued item; available while quantities last. Please contact Uponor Customer Service for availability. All sales are final.

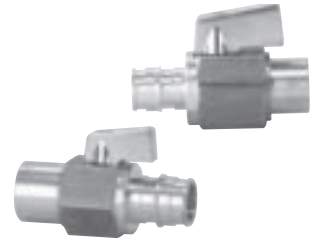
Uponor Plumbing Systems

ProPEX to Copper quarter-turn Ball Valve (brass) features a shutoff valve for 1/2" and 3/4" Uponor AquaPEX tubing to 1/2" and 3/4" copper pipe. This fitting is not compatible with applications using glycol.

Note: ProPEX tool is required. ProPEX Rings sold separately.

Part No.	Part Description	Pkg. Qty.	Case Qty.
LF ◀ Q4805050	ProPEX Ball Valve (large bore), 1/2" PEX x 1/2" Copper Adapter	10	100
Q4807575	ProPEX Ball Valve (large bore), 3/4" PEX x 3/4" Copper Adapter	10	100

Brass ProPEX to Copper Ball Valve



ProPEX Ball Valve (brass) is intended as an in-line, shutoff valve for 1/2", 3/4" and 1" PEX. ProPEX Angle Ball Valve (brass) features a quarter-turn shutoff valve for 1/2" PEX. This fitting is not compatible with applications using glycol.

Note: ProPEX tool is required. ProPEX Rings sold separately.

Part No.	Part Description	Pkg. Qty.	Case Qty.
* Q4815050	ProPEX Ball Valve (large bore), 1/2" PEX x 1/2" PEX	10	100
LF ◀ * Q4817575	ProPEX Ball Valve (large bore), 3/4" PEX x 3/4" PEX	10	100
LF ◀ Q4827575	ProPEX Ball Valve (full port), 3/4" PEX x 3/4" PEX	10	100
LF ◀ Q4821010	ProPEX Ball Valve (full port), 1" PEX x 1" PEX	10	100

Brass ProPEX to ProPEX Ball Valve

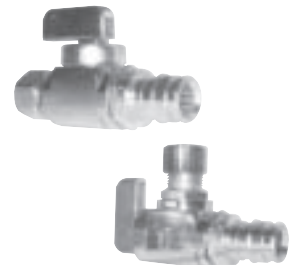


ProPEX Stop Valves (chrome-plated) are available in either straight or angle stop configurations. These stop valves are used for point-of-use shutoff at the fixture. Both valves connect 1/2" AQUAPEX to 3/8" O.D. risers. The valves feature a quarter-turn shutoff.

Note: Compression inserts and rings for the 3/8" riser connections are included with the valves. ProPEX Tool is required to make the 1/2" ProPEX connections. ProPEX Rings sold separately.

Part No.	Part Description	Pkg. Qty.	Case Qty.
LF ◀ * Q4985038	ProPEX Straight Stop, 1/2" PEX, 1/4 Turn Valve	10	-
LF ◀ * Q4995038	ProPEX Angle Stop, 1/2" PEX, 1/4 Turn Valve	10	-

ProPEX Stop Valves



ProPEX Brass Ball Valve features an in-line, quarter-turn turn shut off valve for 1/2" or 3/4" PEX. Drain Port included on the downstream side of the valve.

Note: ProPEX Tool is required. ProPEX Rings must be purchased separately.

Part No.	Part Description	Pkg. Qty.	Case Qty.
Q4815055	ProPEX Stop and Drain Ball Valve (0.44" bore), 1/2" PEX	10	-
Q4817580	ProPEX Stop and Drain Ball Valve (0.44" bore), 3/4" PEX	10	-

ProPEX Stop and Drain Ball Valves



LF Lead-free alternative available in lead-free section.

* Engineered plastic alternate available in EP section.

◀ Discontinued item; available while quantities last. Please contact Uponor Customer Service for availability. All sales are final.

Uponor Plumbing Systems

ProPEX to Copper Ball Valves



ProPEX to Copper Ball Valve (brass) features a shutoff valve for 1/2" or 3/4" AQUAPEX to 1/2" or 3/4" copper pipe.

Note: ProPEX Tool is required. ProPEX Rings must be purchased separately.

Part No.	Part Description	Pkg. Qty.	Case Qty.
Q4835050	ProPEX Valve (small bore), 1/2" PEX x 1/2" Copper Adapter	10	-
Q5807575	ProPEX Valve (0.44" bore), 3/4" PEX x 3/4" Copper Adapter	10	-

ProPEX to ProPEX Ball Valves



ProPEX Ball Valve (brass) features an in-line, shutoff valve for 1/2" or 3/4" PEX.

Note: ProPEX Tool is required. ProPEX Rings must be purchased separately.

Part No.	Part Description	Pkg. Qty.	Case Qty.
* Q4915050	ProPEX Ball Valve (0.44" bore), 1/2" PEX x 1/2" PEX	10	-
* Q4917575	ProPEX Valve (0.44" bore), 3/4" PEX x 3/4" PEX	10	-
Q4945050	ProPEX Valve (small bore), 1/2" PEX x 1/2" PEX	10	-

ProPEX to MIP Ball Valve



ProPEX Ball Valve (brass) features a shutoff valve between 1/2" AQUAPEX and 1/2" male NPT.

Note: ProPEX Tool is required. ProPEX Rings must be purchased separately.

Part No.	Part Description	Pkg. Qty.	Case Qty.
LF ◀ Q4795050	ProPEX Ball Valve, 1/2" PEX x 1/2" Male NPT	25	-

Riser



Lav and Closet Risers are installed with delrin ring (included).

Note: Uponor recommends Riser Washers for hot-water applications.

Part No.	Part Description	Each Qty.	Pkg. Qty.
F1072512	3/8" O.D. x 12" Lav Riser	-	100
F1072520	3/8" O.D. x 20" Lav Riser	-	100
F1072530	3/8" O.D. x 30" Lav Riser	-	100
F1072536	3/8" O.D. x 36" Lav Riser	-	100
F1082512	3/8" O.D. x 12" Closet Riser	-	100
F1082520	3/8" O.D. x 20" Closet Riser	-	100
Q4440250	3/8" I.D. Delrin Ring, replacement part	-	50
Q4300250	Riser Washer, 100/bag	1	-

LF Lead-free alternative available in lead-free section.

* Engineered plastic alternate available in EP section.

◀ Discontinued item; available while quantities last. Please contact Uponor Customer Service for availability. All sales are final.

Uponor Plumbing Systems

ProPEX valves and transition fittings for a variety of installations. A QR14 connector converts 1/2" AQUAPEX to 3/8" compression style where no valves are required by code. Partition stop shuts off water to a bathroom group and the Dishwasher BV/Tee and Swivel elbow set allow the installer to easily disconnect the dishwasher supply line for servicing.

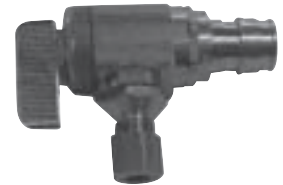
Specialty Item



Part No.	Part Description	Pkg. Qty.	Case Qty.
Q4743855	Brass Elbow, 1/2" Swivel x 3/8" MIP	25	-
Q4825055	1/2" ProPEX Dishwasher Ball Valve Tee	1	-
Q4825050	1/2" ProPEX Partition Stop w/Plate	1	-
Q4975038	Connector, QR14, 1/2" ProPEX x 3/8" Comp. (Straight Adapter)	25	-

Ice Maker Valve connects 1/2" PEX x 1/4" O.D. compression with quarter-turn, shutoff capability.

Ice Maker Valve



Note: ProPEX Tool is required. ProPEX Rings sold separately.

Part No.	Part Description	Pkg. Qty.	Case Qty.
Q4785025	ProPEX Ice Maker Valve, 1/2" PEX x 1/4" O.D. (angle)	10	-
Q4786025	ProPEX Ice Maker Valve, 3/4" PEX x 1/4" O.D. (straight)	10	-

ProPEX Copper Tub Ell provides a 90-degree transition from tub and shower valve to Uponor AquaPEX tubing.

ProPEX Copper Tub Ell



Note: ProPEX Tool is required. ProPEX Rings sold separately.

Part No.	Part Description	Pkg. Qty.	Case Qty.
LF Q2885050	ProPEX Copper Tub Ell, 1/2" PEX x 1/2" Copper (3" x 4")	25	100
Q2875050	ProPEX Copper Tub Ell, 1/2" PEX x 1/2" Copper (3" x 6")	25	100

ProPEX Copper Stub Ell provides a 90-degree transition from Uponor AquaPEX tubing to copper.

ProPEX Copper Stub Ell



Note: ProPEX Tool is required. ProPEX Rings sold separately.

Part No.	Part Description	Pkg. Qty.	Case Qty.
LF Q2865050	ProPEX Copper Stub Ell, 1/2" PEX x 1/2" Copper (3 1/2" x 8")	25	100
Q2895050	ProPEX Copper Stub Ell, 1/2" PEX x 1/2" Copper (8" x 13")	25	100
Q2855050	ProPEX Copper Stub Ell, 1/2" PEX X 1/2" Copper (13" x 8")	25	100
Q2897575	ProPEX Copper Stub Ell, 3/4" PEX x 3/4" Copper (4" x 8")	25	100

ProPEX Copper Straight Stub provides a straight transition from Uponor AquaPEX tubing to copper.

ProPEX Copper Straight Stub



Note: ProPEX Tool is required. ProPEX Rings sold separately.

Part No.	Part Description	Pkg. Qty.	Case Qty.
Q2935050	ProPEX Copper Straight Stub, 1/2" PEX x 1/2" Copper (8")	25	100
Q2945050	ProPEX Copper Straight Stub, 1/2" PEX x 1/2" Copper (15")	25	100

LF Lead-free alternative available in lead-free section.

Discontinued item; available while quantities last. Please contact Uponor Customer Service for availability. All sales are final.

Uponor Plumbing Systems

Copper Branch Manifold



ProPEX 1" Copper Branch Manifold (type L copper) features 1/2" ProPEX brass fitting outlets. The manifold inlet adapts to 3/4" copper pipe.

Note: ProPEX Tool is required. ProPEX Rings sold separately.

Part No.	Part Description	Each Qty.	Pkg. Qty.
Q2031050	ProPEX 1" Copper Branch Manifold with 1/2" ProPEX Outlets, 3 outlets	1	-
Q2041050	ProPEX 1" Copper Branch Manifold with 1/2" ProPEX Outlets, 4 outlets	1	-
Q2051050	ProPEX 1" Copper Branch Manifold with 1/2" ProPEX Outlets, 5 outlets	1	-
Q2061050	ProPEX 1" Copper Branch Manifold with 1/2" ProPEX Outlets, 6 outlets	1	-
Q2071050	ProPEX 1" Copper Branch Manifold with 1/2" ProPEX Outlets, 7 outlets	1	-
Q2081050	ProPEX 1" Copper Branch Manifold with 1/2" ProPEX Outlets, 8 outlets	1	-
Q2091050	ProPEX 1" Copper Branch Manifold with 1/2" ProPEX Outlets, 9 outlets	1	-
Q2101050	ProPEX 1" Copper Branch Manifold with 1/2" ProPEX Outlets, 10 outlets	1	-
Q2111050	ProPEX 1" Copper Branch Manifold with 1/2" ProPEX Outlets, 11 outlets	1	-
Q2121050	ProPEX 1" Copper Branch Manifold with 1/2" ProPEX Outlets, 12 outlets	1	-
◀ Q2131050	ProPEX 1" Copper Branch Manifold with 1/2" ProPEX Outlets, 13 outlets	1	-
◀ Q2141050	ProPEX 1" Copper Branch Manifold with 1/2" ProPEX Outlets, 14 outlets	1	-
◀ Q2151050	ProPEX 1" Copper Branch Manifold with 1/2" ProPEX Outlets, 15 outlets	1	-

EP Valved Manifold and Accessories

EP Valved Manifold Kit

Part No.	Part Description	Each Qty.	Pkg. Qty.
Q2110300	EP Valved Manifold Kit C, 3 outlets with 1/2" ProPEX	1	-
Q2110400	EP Valved Manifold Kit D, 4 outlets with 1/2" ProPEX	1	-

EP Valved Manifold ProPEX Inlet



ProPEX EP Valved Manifold Inlet connects 3/4" and 1" Uponor AquaPEX tubing to the manifold. The EP Valved Manifold End Cap seals the unused inlet on the manifold.

Note: ProPEX Tool is required. ProPEX Rings and Assembly/Mounting Brackets are required and sold separately.

Part No.	Part Description	Each Qty.	Pkg. Qty.
Q2120750	EP Valved Manifold 3/4" ProPEX Inlet	-	10
Q2121000	EP Valved Manifold 1" ProPEX Inlet	-	10
Q2121250	EP Valved Manifold End Cap	-	10

EP Valved Manifold Coupling



The EP Valved Manifold Coupling joins manifold sections.

Note: Assembly/Mounting Brackets are required and sold separately.

Part No.	Part Description	Each Qty.	Pkg. Qty.
Q2121251	EP Valved Manifold Stop Coupling	-	10
Q2121313	EP Valved Manifold Flow-through Coupling	-	10

◀ Discontinued item; available while quantities last. Please contact Uponor Customer Service for availability. All sales are final.

Uponor Plumbing Systems

The EP Valved Manifold Assembly/Mounting Bracket assembles manifold sections and mounts the manifold to the wall or stud. One bracket is required per manifold joint.

EP Valved Manifold Assembly/Mounting Bracket



Part No.	Part Description	Each Qty.	Pkg. Qty.
Q2120020	EP Valved Manifold Assembly/Mounting Bracket	-	10

Replacement EP Valved Manifold Accessories.

Note: Valve clips are required and sold separately.

EP Valved Manifold Accessories



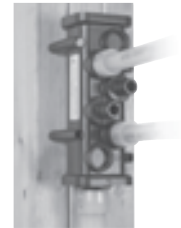
Part No.	Part Description	Each Qty.	Pkg. Qty.
Q2120050	EP Valved Manifold Valve Cylinder with O-rings	-	10
Q2120010	EP Valved Manifold Valve-turning Tool, replacement part	-	10
Q2120001	EP Valved Manifold Red Valve Clip	-	100
Q2120002	EP Valved Manifold Blue Valve Clip	-	100

EP Valveless Manifolds

The EP Valveless Branch Manifold is available with 3/4" or 1" inlets and 4, 6 or 8, 1/2" ProPEX outlets. The manifold is made of EP, the same durable material used in Uponor's EP fittings.

Note: ProPEX Tool is required. ProPEX Rings sold separately.

EP Valveless Manifold



Part No.	Part Description	Each Qty.	Pkg. Qty.
Q2200400	EP Valveless Branch Manifold, 4 outlets, 3/4" ProPEX	1	-
Q2200600	EP Valveless Branch Manifold, 6 outlets, 3/4" ProPEX	1	-
Q2210800	EP Valveless Branch Manifold, 8 outlets, 1" ProPEX	1	-

The EP Flow-through Valveless Manifold is available in 8, 10 or 12, 1/2" ProPEX outlets. The manifold comes with 3/4" and 1" ProPEX inlets. All outlets are 1/2" ProPEX connections. The manifold is made of EP, the same durable material used in Uponor's EP fittings.

Note: ProPEX Tool is required. ProPEX Rings sold separately.

EP Flow-through Valveless Manifold



Part No.	Part Description	Each Qty.	Pkg. Qty.
Q2240800	EP Flow-through Valveless Manifold, 8 outlets, 1" x 3/4" ProPEX	1	-
Q2241000	EP Flow-through Valveless Manifold, 10 outlets, 1" x 3/4" ProPEX	1	-
Q2241200	EP Flow-through Valveless Manifold, 12 outlets, 1" x 3/4" ProPEX	1	-

Uponor Plumbing Systems

ProPEX Copper Manifolds

ProPEX 1" (type L) Copper Valved Manifold



ProPEX 1" Copper Valved Manifold features ½" ProPEX valve connections allowing for simple and easy isolation of individual loops. Sections can sweat together to extend the number of outlets using a standard 1" copper coupling. Both 1" ends are copper pipe size and require a copper end cap, coupling or transition fitting to make the proper system connection. Do not exceed accepted flow rates for 1-inch nominal copper.

Note: ProPEX Tool is required. ProPEX Rings sold separately. Not intended for applications using glycol.

Part No.	Part Description	Each Qty.	Pkg. Qty.
Q2500400	ProPEX 1" Copper Manifold with ½" ProPEX Ball Valve, 4 outlets	1	-
Q2500600	ProPEX 1" Copper Manifold with ½" ProPEX Ball Valve, 6 outlets	1	-
Q2500800	ProPEX 1" Copper Manifold with ½" ProPEX Ball Valve, 8 outlets	1	-
Q2501000	ProPEX 1" Copper Manifold with ½" ProPEX Ball Valve, 10 outlets	1	-
Q2501200	ProPEX 1" Copper Manifold with ½" ProPEX Ball Valve, 12 outlets	1	-

ProPEX Accessories

D'MAND® Hot Water Delivery System



The D'MAND® Hot Water Delivery System is an integral part of the Uponor plumbing layout, which is designed to maximize energy and water savings, minimize connections, and reduce hot water delivery times. The D'MAND hot water delivery system provides two different system pumps: Model 100 and Model 200. The Model 100 supports plumbing systems with the farthest fixture less than 100 feet from the pump location. The Model 200 supports plumbing systems with the farthest fixture more than 100 feet from the pump location. The D'MAND system requires either an Activation Button or Motion Sensor to activate the system.

Part No.	Part Description	Each Qty.	Pkg. Qty.
Q6700070	D'MAND Model 100	1	-
Q6700002	D'MAND Model 200	1	-

D'MAND Activation Button



The D'MAND Activation Button is used in areas where the homeowner wants to select when the D'MAND Hot Water Delivery System is activated. Two-wire, low-voltage thermostat wire connects the Activation Button to the control on the D'MAND pump.

Part No.	Part Description	Each Qty.	Pkg. Qty.
Q6700101	D'MAND Activation Button	1	-

Uponor Plumbing Systems

The D'MAND Motion Sensor is used in low-traffic areas within the home such as a guest bathroom. Three-wire, low-voltage thermostat wire connects the Motion Sensor to the control on the D'MAND pump.

D'MAND Motion Sensor



Part No.	Part Description	Each Qty.	Pkg. Qty.
Q6700102	D'MAND Motion Sensor, hard-wired	1	-

ProPEX Washing Machine Outlet Box comes with two 1/2" ProPEX hot and cold color-coded valves. The versatility of the box allows the installer the freedom to mount the box with the valves either on the top or bottom. The four support brackets make mounting the box quick and easy. The included snap-on cover plate accommodates up to 1" drywall.

ProPEX Washing Machine Outlet Box



Note: ProPEX Tool is required. ProPEX Rings sold separately.

Part No.	Part Description	Each Qty.	Pkg. Qty.
LF ◀ Q5930500	ProPEX Washing Machine Outlet Box, 1/2" ProPEX Valves	-	12

ProPEX Ice Maker Box with Support Bracket comes with one 1/2" ProPEX valve. The valve has a 1/4" O.D. compression connection for connecting to standard ice maker tubing. The two support brackets make mounting the box quick and easy.

ProPEX Ice Maker Box with Support Bracket



Note: The cover plate for this ice maker box is sold separately. ProPEX Tool is required. ProPEX Rings sold separately.

Part No.	Part Description	Each Qty.	Pkg. Qty.
Q5830005	Replacement Cover	-	12
Q5840001	Replacement Support Brackets	-	12
LF ◀ Q5955025	ProPEX Ice Maker Box with Support Brackets, 1/2" ProPEX Valve	-	6

LF Lead-free alternative available in lead-free section.

◀ Discontinued item; available while quantities last. Please contact Uponor Customer Service for availability. All sales are final.

Uponor Plumbing Systems

ProPEX In-line Ice Maker Tee



ProPEX In-line Ice Maker Tee, 1/2" PEX x 1/2" PEX; valve features 1/8" NPT x 1/4" O.D. compression.

Note: ProPEX tool is required. ProPEX Rings sold separately.

Part No.	Part Description	Each Qty.	Pkg. Qty.
Q4455050	ProPEX In-line Ice Maker Tee, 1/2" PEX x 1/2" PEX x 1/4" O.D. compression	-	10

ProPEX Escutcheon



ProPEX Escutcheon with flaired sleeve provides an attractive cover for 1/2" Uponor AquaPEX tubing and ProPEX connections as they exit the wall. Available in white or chrome-plated.

Part No.	Part Description	Pkg. Qty.	Case Qty.
F5650500	ProPEX Escutcheon for 1/2" PEX (1 1/16" O.D.), chrome-plated	25	100
F5670500	ProPEX Escutcheon for 1/2" PEX (1 1/16" O.D.), white	25	100

Chrome Finishing Sleeve



Chrome Finishing Sleeve slides over 1/2" Uponor AquaPEX tubing connected to point-of-use valve to provide protection and improve appearance.

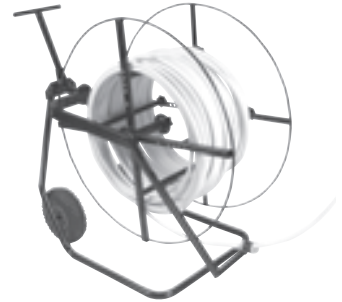
Part No.	Part Description	Pkg. Qty.	Case Qty.
F5600500	Chrome Finishing Sleeve for 1/2" PEX (1 1/16" O.D.)	25	100

Tube Uncoilers

The Select Uncoiler facilitates the uncoiling of 5/16" to 1" Uponor PEX or up to 5/8" MLC tubing, which simplifies installation and reduces labor. The robust construction features an adjustable reel to allow for either horizontal or vertical position uncoiling. The durable wheels make for easy portability, and the uncoiler is equipped with a tubing-feed eyelet.

Part No.	Part Description	Each Qty.	Pkg. Qty.
E6062000	Select Uncoiler	1	-

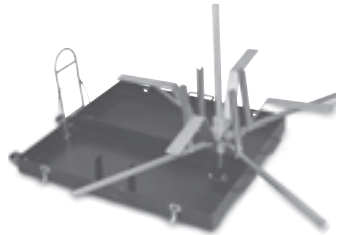
Select Uncoiler



The Compact Select Uncoiler facilitates the uncoiling of 5/16" to 1" Wirsbo AQUAPEX or hePEX plus tubing. The entire 65-pound unit conveniently collapses into its own heavy-duty, compact carrying case, allowing for quick and efficient transport of the uncoiler as well as easy storage when not in use.

Part No.	Part Description	Each Qty.	Pkg. Qty.
E6063000	Compact Select Uncoiler	1	-

Compact Select Uncoiler



The Tube Uncoiler facilitates the uncoiling of 5/16" to 1" Uponor AquaPEX tubing, which simplifies installation and reduces labor. Weighted arms hold tubing in place while uncoiling. Eyelet keeps tubing from tangling. Base is collapsible. No additional hardware necessary for attaching arms. Easy to assemble.

Note: Upon assembly, install the guide pin on the swivel arm in order to keep the arm in place.

Part No.	Part Description	Each Qty.	Pkg. Qty.
NEW E6061000	Tube Uncoiler	1	-
E6061100	Deluxe Uncoiler	1	-

Tube Uncoiler



Tube Handling

Tube Cutters

Tube Cutter



Metal Tube Cutter cuts up to 1" PEX tubing. Plastic Tube Cutter cuts up to 1" PEX or 3/4" MLC tubing.

Part No.	Part Description	Each Qty.	Pkg. Qty.
E6081125	Tube Cutter (metal) for up to 1" PEX	1	-
E6081140	Tube Cutter Replacement Blade for E6081125, spare part	1	-
E6081128	Tube Cutter (plastic) for up to 1" PEX (3/4" MLC Tubing)	1	-
E6081143	Tube Cutter Replacement Blade for E6081128, spare part	1	-

Ratchet-style Tube Cutter



Ratchet-style Tube Cutter cuts up to 1" PEX. Ratchet-style Large Dimension Tube Cutter cuts 1" to 2" PEX.

Part No.	Part Description	Each Qty.	Pkg. Qty.
E6081500	Ratchet-style Tube Cutter for up to 1" PEX and MLC Tubing	1	-
E6081544	Tube Cutter Replacement Blade for E6081500, spare part	1	-
E6082000	Ratchet-style Large Dimension Tube Cutter for 1" to 2" PEX	1	-

ProPEX Tools and Accessories

The Uponor ProPEX 201 Corded Expander Tool meets the need for reliable, cost-effective solutions to commercial-sized 2" PEX installations. This 110-volt, electro-hydraulic tool makes fast, easy connections for 2" Uponor AquaPEX and hePEX tubing. The ProPEX 201 Corded Expander Tool uses the same 2" H-series expander heads currently in use with other Uponor tools.

Part No.	Part Description	Each Qty.	Pkg. Qty.
Q6272000	ProPEX 201 Corded Expander Tool Kit	1	-
Q6272002	ProPEX 201 Replacement Case	1	-

ProPEX 201 Corded Expander Tool Kit



The ProPEX 200 Battery Expander Tool is an electro-hydraulic tool with microprocessor-based intelligence that makes fast, easy connections to 1/2" through 2" Uponor PEX tubing. The tool kit includes a 1 1/2" pistol for making connections to 1/2" through 1 1/2" tubing, a 2" pistol with a 2" H-series expander head for making connections to 2" tubing.

The tool uses both H-series ProPEX Expander Heads as well as the regular ProPEX Expander Heads.

Note: ProPEX Expander Heads for 1/2" through 1 1/2" tubing sold separately.

Part No.	Part Description	Each Qty.	Pkg. Qty.
Q6262000	ProPEX 200 Battery Expander Tool Kit (Includes 2" pistol, 1 1/2" pistol, 2" H-series expander head, 10-foot hydraulic hose, hydraulic pump, battery charger, two batteries, expander head lubricant, operation manual and roller case)	1	-
Q6260200	ProPEX 200 Battery, replacement part	1	-
Q6260700	ProPEX 200 Battery Charger, replacement part	1	-

ProPEX 200 Battery Expander Tool Kit and Accessories



The electro-mechanical ProPEX 150 Battery Expander Tool expands 1/2", 5/8", 3/4", 1", 1 1/4" and 1 1/2" Uponor PEX tubing using the ProPEX connection method. This ProPEX Battery Expander Tool uses the H-series ProPEX Expander Heads up to 1 1/2" as well as the standard ProPEX Expander Heads. The standard kit includes the Battery Expander Tool, two batteries, one battery charger, lubricant for expander heads and a heavy-duty carrying case. The deluxe kit includes all the components of the standard kit plus the Auto rotation adapter, 1/2", 3/4" and 1" regular ProPEX expander heads.

Note: ProPEX Expander Heads sold separately.

Part No.	Part Description	Each Qty.	Pkg. Qty.
Q6261500	ProPEX 150 Battery Expander Tool Kit	1	-
Q6261550	ProPEX 150 Deluxe Battery Expander Tool Kit	1	-
Q6260100	ProPEX 150 Battery, replacement part	1	-
Q6260600	ProPEX 150 Battery Charger, replacement part	1	-

ProPEX 150 Battery Expander Tool Kit and Accessories



Tools and Accessories

ProPEX Auto Rotation Adapter



Designed to use with all standard expander tools and standard expander heads (1/2" to 1"), the ProPEX Auto Rotation Adapter eliminates the need to rotate the tubing when making ProPEX connections.

Note: The ProPEX Auto Rotation Adapter is not compatible with the ProPEX 200 Battery Expander Tool or H-series Expander Heads.

Part No.	Part Description	Each Qty.	Pkg. Qty.
Q6323810	ProPEX Auto Rotation Adapter	1	-

ProPEX Air Expander Tool Kit



ProPEX Air (pneumatic) Expander Tool expands 1/2", 3/4" and 1" Uponor PEX tubing products using the ProPEX connection method. Kit includes 1/2" head, lubricant, carrying case and 4 oz. tube of pneumatic oil.

Note: The 3/4" and 1" Expander Heads are sold separately.

Part No.	Part Description	Each Qty.	Pkg. Qty.
Q6301000	ProPEX Air Expander Tool Kit	1	-
Q6301010	ProPEX Air Expander Oil, 4 oz. bottle, replacement part	1	-

ProPEX Hand Expander Tool Kit



The ProPEX Hand (Manual) Expander Tool Kit includes 1/2", 3/4" and 1" heads, tool lubricant and a sturdy carrying case.

Part No.	Part Description	Each Qty.	Pkg. Qty.
Q6295075	ProPEX Hand Expander Tool Kit	1	-

ProPEX Hand Expander Tool



The ProPEX Hand (Manual) Expander Tool (includes 1/2" and 3/4" heads only) features rugged, tool-hardened heads and an ergonomic handle design for use on 1/2" to 1" ProPEX connections.

Part No.	Part Description	Each Qty.	Pkg. Qty.
Q6295010	ProPEX Hand Expander Tool (1/2" and 3/4" heads only)	1	-

ProPEX Expander Head



Standard ProPEX Expander Heads are used on all ProPEX Expander Tools.

Part No.	Part Description	Each Qty.	Pkg. Qty.
Q6310375	3/8" ProPEX Expander Head	1	-
Q6310500	1/2" ProPEX Expander Head	1	-
Q6310625	5/8" ProPEX Expander Head	1	-
Q6310750	3/4" ProPEX Expander Head	1	-
Q6311000	1" ProPEX Expander Head	1	-

Tools and Accessories

The H-series ProPEX Expander Heads are used only with the ProPEX 150 Battery Expander Tool (Q6261500) and ProPEX 200 Battery Expander Tool (Q6262000).

H-series ProPEX Expander Heads require less number of expansions than the regular ProPEX Expander Heads. Heads are identified with an "H" stamp on head.

Note: The H-series ProPEX Expander Heads are not compatible with the ProPEX Hand Expander, ProPEX Air Expander or the Auto Rotation Adapter.

H-series ProPEX Expander Head



Part No.	Part Description	Each Qty.	Pkg. Qty.
Q6380750	¾" H-series ProPEX Expander Head	1	-
Q6381000	1" H-series ProPEX Expander Head	1	-
Q6381250	1¼" H-series ProPEX Expander Head	1	-
Q6381500	1½" H-series ProPEX Expander Head	1	-
Q6282000	2" H-series ProPEX Expander Head	1	-

Graphite Grease lubricates ProPEX Expander Tool cones.

Part No.	Part Description	Each Qty.	Pkg. Qty.
Q5590028	Graphite Grease for ProPEX Tools, spare part	1	-

Graphite Grease



MLC Press Fitting Tools and Accessories

The Mini-Press Battery Tool is an electro-hydraulic press fitting tool that makes fast, easy connections to ½" through 1" Uponor MLC tubing. The tool kit with jaws includes one battery, one charger and press jaws for ½", ⅝", ¾" and 1" tubing. The tool kit without jaws includes two batteries and one charger.

Part No.	Part Description	Each Qty.	Pkg. Qty.
D6260000	Mini-Press Battery Tool Kit (no jaws)	1	-
D6261632	Mini-Press Battery Tool Kit (with jaws)	1	-
D6260001	Mini-Press Tool Battery 9.6V, replacement part	1	-
D6260002	Mini-Press Tool Battery Charger, replacement part	1	-
D6260500	½" Press Jaw for Mini-Press Battery Tool	1	-
D6260625	⅝" Press Jaw for Mini-Press Battery Tool	1	-
D6260750	¾" Press Jaw for Mini-Press Battery Tool	1	-
D6261000	1" Press Jaw for Mini-Press Battery Tool	1	-

Mini-Press Battery Tool and Accessories



MLC Press Fitting Manual Tool makes ½" and ⅝" MLC Press fittings. Kit includes manual press tool, ½" and ⅝" inserts and a carrying case.

Part No.	Part Description	Each Qty.	Pkg. Qty.
D6275063	MLC Press Fitting Manual Tool Kit	1	-
D6270500	½" Replacement Insert for MLC Press Fitting Manual Press Tool	1	-
D6270625	⅝" Replacement Insert for MLC Press Fitting Manual Press Tool	1	-

MLC Press Fitting Manual Tool



Tools and Accessories

MLC Tubing T-handle Chamfering Tool



The MLC Tubing T-handle Chamfering Tool bevels the ends of 1/2", 5/8", 3/4" and 1" MLC tubing in preparation for making a fitting connection. The T-handle is removable to use the tool with a drill for multiple chamfering.

Part No.	Part Description	Each Qty.	Pkg. Qty.
D6100500	1/2" MLC Tubing T-handle Chamfering Tool	1	-
D6100625	5/8" MLC Tubing T-handle Chamfering Tool	1	-
D6100750	3/4" MLC Tubing T-handle Chamfering Tool	1	-
D6101000	1" MLC Tubing T-handle Chamfering Tool	1	-

MLC Tubing Three-way Chamfering Tool

The MLC Tubing Three-way Chamfering Tool bevels the end of 1/2", 5/8" and 3/4" MLC tubing in preparation for making a fitting connection. The side of the tool marks the tubing for the correct insert depth.

Part No.	Part Description	Each Qty.	Pkg. Qty.
D6105063	MLC Tubing Three-way Chamfering Tool, 1/2", 5/8" and 3/4"	1	-

MLC Tubing Bending Tool

The MLC Tubing Bending Tool allows for more precise, tighter bending radius than manual bends.

Part No.	Part Description	Each Qty.	Pkg. Qty.
D6165010	MLC Tubing Bending Tool (up to 1" tubing)	1	-

Other Tools

Service Wrench



Service Wrench features a lightweight, compact design. Use the 1 3/16" service wrench to tighten QS-style fitting assemblies to the manifolds. Use the 1 7/8" service wrench to tighten manifold union nuts.

Part No.	Part Description	Each Qty.	Pkg. Qty.
E6111188	1 3/16" Service Wrench	1	-
E6110046	TruFLOW Service Wrench, 46 mm	1	-

Quik Trak Installation Tool Kit



The Quik Trak Installation Tool Kit is an auto-feed screw system that features labor-saving speed for Quik Trak installations. The easy-to-use screw gun is lightweight and the extension arm reduces fatigue. The kit includes 120VAC screw gun with vertical extension arm, square head drive screw bits, bit retrieval tool and hard-sided case.

Part No.	Part Description	Each Qty.	Pkg. Qty.
E6050000	Quik Trak Installation Tool Kit	1	-
E6050005	Quik Trak Bits and Tool (set of 3 square drive bits and 1 tool)	1	-

Tubing Supports

Plastic Bend Support (glass-reinforced nylon) provides rigid 90-degree bend and sleeve for $\frac{3}{8}$ ", $\frac{1}{2}$ " and $\frac{3}{4}$ " Uponor PEX tubing.

Plastic Bend Support

Part No.	Part Description	Each Qty.	Pkg. Qty.
A5150375	$\frac{3}{8}$ " Plastic Bend Support	-	25
A5250500	$\frac{1}{2}$ " Plastic Bend Support	-	25
A5150750	$\frac{3}{4}$ " Plastic Bend Support	-	50



Metal Bend Support (zinc-plated) provides rigid 90-degree bend for $\frac{3}{8}$ ", $\frac{1}{2}$ ", $\frac{5}{8}$ " and $\frac{3}{4}$ " Uponor PEX tubing.

Metal Bend Support

Part No.	Part Description	Each Qty.	Pkg. Qty.
A5110375	$\frac{3}{8}$ " Metal Bend Support	-	50
A5110500	$\frac{1}{2}$ " Metal Bend Support	-	50
A5110625	$\frac{5}{8}$ " Metal Bend Support	-	50
A5110750	$\frac{3}{4}$ " Metal Bend Support	-	25



PVC Bend Support provides rigid 90-degree bend and sleeve for $\frac{3}{8}$ ", $\frac{1}{2}$ ", $\frac{5}{8}$ ", $\frac{3}{4}$ " and 1" Uponor PEX tubing runs exiting a concrete slab.

PVC Bend Support

Part No.	Part Description	Each Qty.	Pkg. Qty.
A5500500	$\frac{3}{4}$ " PVC Elbow for $\frac{3}{8}$ " and $\frac{1}{2}$ " PEX Bend Support	-	25
A5500625	1" PVC Elbow for $\frac{5}{8}$ " PEX Bend Support	-	25
A5500750	1 $\frac{1}{4}$ " PVC Elbow for $\frac{3}{4}$ " PEX Bend Support	-	20
A5501000	1 $\frac{1}{2}$ " PVC Elbow for 1" PEX Bend Support	-	25



Metal Drop Ear Bend Support (zinc-plated) provides rigid 90-degree bend and connection-free stub-out from a stud wall or floor for $\frac{3}{8}$ " or $\frac{1}{2}$ " Uponor AquaPEX tubing.

Metal Drop Ear Bend Support

Part No.	Part Description	Each Qty.	Pkg. Qty.
F5120500	$\frac{1}{2}$ " Metal Drop Ear Bend Support	-	25



Tubing Supports

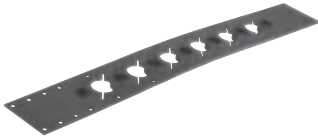
Straight-through Support



Straight-through Support (zinc-plated) provides rigid straight-through support for 1/2" Uponor AquaPEX tubing as it exits a floor.

Part No.	Part Description	Each Qty.	Pkg. Qty.
F5140500	1/2" Metal Straight-through Support	-	25

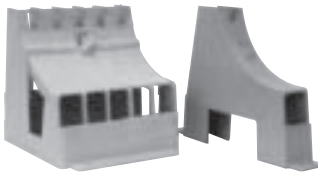
PEX Wall Support Bracket



Plastic Wall Support bracket provides rigid straight-through support for 1/2" or 3/4" Uponor AquaPEX tubing, fixed 2" on-center spacing, and allows the 1/2" Plastic Bend Support to snap into place for 1/2" Uponor AquaPEX tubing as it exits a wall.

Part No.	Part Description	Each Qty.	Pkg. Qty.
A5750500	PEX Wall Support Bracket, 1/2" and 3/4"	-	25

PEX Stand-up Bracket



PEX Stand-up Bracket is used in residential slab or commercial multi-floor construction. Secure the bracket to the deck form. Then install the 1/2" PEX tubing in the bracket, either with the 1/2" PEX tubing alone or the 1/2" PEX tubing sleeved inside corrugated polyethylene carrier tube. The brackets are available in either single- or five-tube configurations. The J-Bracket's lower profile allows for use in 6" slabs. The J-Bracket also allows for up to 1" PE sleeving with 3/4" tubing.

Part No.	Part Description	Each Qty.	Pkg. Qty.
F5801000	Single-tube PEX Stand-up Bracket for 1/2" PEX	-	60
F5805000	Five-tube PEX Stand-up Bracket for 1/2" PEX	-	16

Fasteners, Fastener Tools and Protectors

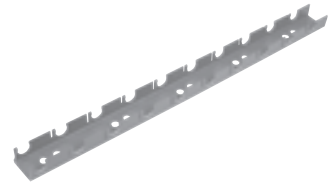
Fasteners and Fastener Tools

Plastic PEX Rail secures Uponor PEX tubing products to metal and wood-support structures.

Note: Suitable fastening hardware is required (not included).

Part No.	Part Description	Each Qty.	Pkg. Qty.
A5700500	1/2" PEX Rail, 6.5 ft.	1	16
A5700625	5/8" PEX Rail, 6.5 ft.	1	16
NEW A5700750	3/4" PEX Rail, 6.5 ft.	1	16

PEX Rail



The PEX Clip provides excellent holding power and can attach together laterally for tight installations. The PEX Clip is attached under the wood subfloor for joist heating applications. The clip prevents the tubing from coming in direct contact with the subfloor, eliminating the possibility of creating uncomfortable hot spots on the floor above. Drywall screws are commonly used to secure the clips to the wood subfloor.

Note: Select a screw length so it does not penetrate entirely through the wood subfloor once installed.

Part No.	Part Description	Each Qty.	Pkg. Qty.
F7051258	1/2" PEX Clip, 100/box	1	-
F7057500	3/4" PEX Clip, 100/box	1	-
F7051001	1" PEX Clip, 50/box	1	-

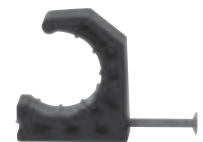
PEX Clip



Tube Talon secures 1/2", 5/8", 3/4" and 1" Uponor PEX tubing products. Fasteners are included.

Part No.	Part Description	Each Qty.	Case Qty.
F7050375	Tube Talon (3/8" PEX), 100/bag	1	10
F7050750	Tube Talon (1/2", 5/8", 3/4" PEX), 100/bag	1	10
F7051000	Tube Talon (1" PEX), 50/bag	1	10

Tube Talon



Tube Clamps secure 1/2" and 3/4" Uponor PEX tubing products.

Part No.	Part Description	Each Qty.	Pkg. Qty.
A7250500	1/2" Tube Clamp Suspension, 100/pkg.	1	-
A7250750	3/4" Tube Clamp Suspension, 50/pkg.	1	-
A7350500	1/2" Tube Clamp Standard, 100/pkg.	1	-
A7350750	3/4" Tube Clamp Standard, 50/pkg.	1	-

Tube Clamp



Fasteners, Fastener Tools and Protectors

Tubing Clip



Tubing Clip secures 1/2" Uponor AquaPEX tubing in shallow installations where the Tube Talon is unsuitable.

Part No.	Part Description	Each Qty.	Pkg. Qty.
Q7400500	Plastic Tubing Clip, 1/2", 100/box	1	-

U-shaped Tube Fastener



Manually secure galvanized U-shaped Tube Fastener to 3/8", 1/2", and 5/8" Uponor PEX tubing to wood subflooring.

Part No.	Part Description	Each Qty.	Pkg. Qty.
A7040250	U-shaped Tube Fastener, 250/box	1	-

Fixing Wire Twister



Use Fixing Wire Twister with fixing wire (A7031000).

Part No.	Part Description	Each Qty.	Pkg. Qty.
E6090005	Fixing Wire Twister	1	-

Ratchet-style Fixing Wire Twister



Use Ratchet-style Fixing Wire Twister with fixing wire (A7031000).

Part No.	Part Description	Each Qty.	Pkg. Qty.
E6091700	Ratchet-style Fixing Wire Twister	1	-

Fixing Wire



Specially formulated 6" galvanized steel alloy tie secures Uponor PEX tubing products to wire mesh or rebar. Use with fixing wire twisters.

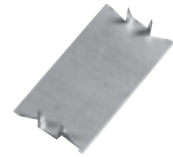
Part No.	Part Description	Each Qty.	Pkg. Qty.
A7031000	Fixing Wire, 1,000/bundle	1	5

Fasteners, Fastener Tools and Protectors

Steel Plate Protector protects tubing from possible damage by drywall, trim screws or nails, etc.

Steel Plate Protector

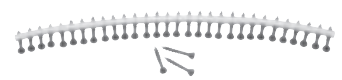
Part No.	Part Description	Each Qty.	Pkg. Qty.
F5700002	Steel Plate Protector, 100/box	1	-



The 1¼" screws are designed specifically for Quik Trak installations using ¾" subfloors.

Quik Trak Screws

Part No.	Part Description	Each Qty.	Pkg. Qty.
E6051250	Quik Trak Screws (1¼"), 2,500/box	1	-



Quik Trak Sealant is 100% silicone and provides good thermal transfer. Use to adhere 5/16" Wirsbo hePEX tubing in the Quik Trak groove.

Quik Trak Sealant

Part No.	Part Description	Each Qty.	Pkg. Qty.
E6050010	Quik Trak Sealant, 10.3 fluid oz. (300 ml)	-	24



Pneumatic Stapler Kit fires 5/8" through 1¼" staples with a 1-inch crown. Kit includes stapler, walking stick and conventional nose piece for attaching ½" and 5/8" Uponor PEX to subfloors.

Pneumatic Stapler Kit

Part No.	Part Description	Each Qty.	Pkg. Qty.
E6021638	Pneumatic Stapler Kit	1	-



Metal Staples are available in 5/8" and 1¼" lengths with a 1" crown. Use 5/8" staple to secure aluminum plates to furring strips or subfloors. Use 1¼" staples in staple-down installations to secure 3/8", ½" and 5/8" Uponor PEX to wood subfloors.

Metal Staples

Note: Uponor does not recommend this use of staples for joist-heating applications.

Part No.	Part Description	Each Qty.	Pkg. Qty.
A7011250	1¼" Metal Staples, 10,000/box	1	-



Fasteners, Fastener Tools and Protectors

Manual Foam Stapler



Use Manual Foam Stapler with Plastic Foam Staples (A7015050, A7015075) to attach 1/2" and 5/8" Uponor PEX to rigid foam insulation.

Part No.	Part Description	Each Qty.	Pkg. Qty.
E6025075	Manual Foam Stapler	1	-

Plastic Foam Staples



Use Plastic Foam Staples with Manual Foam Stapler (E6025075) to secure 1/2" and 5/8" Uponor PEX to rigid foam insulation.

Note: Use 1 1/2" Foam Staples (A7015050) for 1-inch foam and 2 1/2" Foam Staples (A7015075) for 1 1/2-inch or thicker foam.

Part No.	Part Description	Each Qty.	Pkg. Qty.
A7015050	1 1/2" Plastic Foam Staples, 300/box	1	-
A7015075	2 1/2" Plastic Foam Staples, 300/box	1	-

Plastic Mounting Bracket



Part No.	Part Description	Each Qty.	Pkg. Qty.
Q7040100	Plastic Mounting Bracket	-	25

Protective Tubing Caps



The Protective Tubing Caps are intended to protect the tubing from debris during the installation phase. They are easily installed on and removed from the tubing terminations. They are not for permanent application. Do not use for pressure testing.

Part No.	Part Description	Each Qty.	Case Qty.
F4350500	1/2" Protective Tubing Cap, 50/bag	1	5
F4350625	5/8" Protective Tubing Cap, 50/bag	1	5
F4350750	3/4" Protective Tubing Cap, 50/bag	1	5
F4351000	1" Protective Tubing Cap, 50/bag	1	5

Uponor General Conditions

1. A Purchase Order, when accepted, is not subject to cancellation, change, reduction in amount or suspension of deliveries except with the written consent of UPONOR and upon terms which indemnify said company against loss.
2. Any change of design, delivery schedule or instructions of any kind must be submitted in writing. UPONOR shall not be bound by any such change unless it first agrees in writing and then only upon such terms as it shall make to cover any additional cost caused by such changes.
3. Prices quoted are based on quantities and deliveries as stated and any deviation requested by the customer may require additional cost for which the customer will be responsible.
4. Any taxes which may now or hereafter be imposed by any taxing authority in respect to this instrument or product or sale contracted for are to be added to and become a part of the price payable by the buyer.
5. UPONOR shall not be responsible for any loss or damage occurring by reason of delay or inability to secure material or skilled labor, priority allocation or other material regulations, or any other cause, similar or dissimilar.
6. Claims for shortages or rejection must be made within ten days after receipt of goods. UPONOR shall not be held responsible for any claims made after the 10 days. Claims for breakage, damage or loss should be presented directly to the transportation company upon receipt of merchandise.
7. It is understood that the delivery dates specified are based upon conditions prevailing as of the date of acceptance of the Purchase Order and that UPONOR shall not be responsible for any delay in said delivery dates or by any cancellation of the order which may be caused by conditions either out of its control or unforeseeable to it at the time the order was placed.
8. UPONOR shall have the right to modify without notice the specifications, product design and configurations of parts sold, providing that any such modifications will not materially affect performance.
9. UPONOR reserves the right to withhold shipment of any items ordered until arrangements for payment, satisfactory to UPONOR, are met.
10. All product sold in listed packaged quantities only.
11. Orders, when accepted, shall become contract effective under the laws of Canada and shall not be changed, altered or abridged by any printed items which may be included in a customer's purchase order or by any verbal agreement unless such changes are agreed upon in writing by UPONOR.
12. The minimum order is \$100.00 NET.
13. Freight charges will be prepaid on all orders over \$15,000 net. Contact your local UPONOR Sales Representative for terms and conditions on rush orders and order discount structures.
14. Subject to Credit Approval, payment terms are 30 days net from date of invoice. Service charges are applicable on past due accounts at a rate of 1.5% per month which is equal to an annual percentage rate of 18%.
15. Wholesalers will be advised of applicable discount rate from List Price by a separate letter.
16. Prices subject to change without notice.
17. Please Note: UPONOR does have a Return Materials Policy. For assistance on returning product(s) please contact an UPONOR Representative who will advise you on the procedure and policies with returning goods to our facility. In order to serve you better, UPONOR will issue a Return Materials Authorization Number (RMA) that will ensure that a request to return product is handled quickly and efficiently.

Freight Policy

LTL and Truckload Shipments

Orders over \$15,000 net will ship prepaid within 5 business days. Uponor will accept purchase orders from a maximum of four different branches to qualify for prepaid freight if the following conditions are met:

- The orders must be received by Uponor at the same time.
- Orders must ship on the same day.
- Orders must specify that they are piggyback orders when they are placed and state which orders they will ship with.
- Uponor will not be responsible for organizing piggyback orders.
- Uponor will not hold orders while waiting for other branches to place their orders.
- Prepaid is a service and benefit offered at Uponor's discretion, therefore 5 business days applies to all prepaid orders.
All rush orders will be shipped collect via your specified carrier.

Orders less than \$15,000 net will ship collect within 5 business days via your specified carrier.

Courier Shipments

Courier shipments (weighing less than 250lbs) will ship within 3 business days. Customer must assign carrier.

Rush Shipments

Orders will ship the same day if the following conditions are met.

- Purchase orders must be stamped rush.
- Customer must assign carrier and pay freight.
- Shipment must weigh less than 250lbs.
- Purchase order must be received by Uponor prior to:
 - 11 am EST for shipments out of Brampton.
 - 1 pm CST for shipments out of Regina.
- Orders received after cut off times will ship next business day.
- Order must meet \$100 net minimum requirement.

Requests to rush orders over 250lbs will be considered if they do not interfere with our standard service commitments. Approval must come from the Distribution Manager. Please note that rush orders are not prepaid freight. If the prepaid order is required prior to the 5 business days the freight will be charged collect via the wholesales choice carrier. Prepaid is a service and benefit offered at Uponor's discretion, therefore 5 business days apply to all prepaid orders.

Note* There is a \$100 net minimum order requirement for invoicing purposes to all stocking distributors.

UPONOR : conditions générales

1. Une fois accepté, un bon de commande ne peut pas faire l'objet d'annulation, de changement, de réduction du montant ou d'arrêt de livraison sans le consentement écrit d'UPONOR (la Société) et en vertu de modalités qui l'indemnisent de toute perte.
2. Tout changement relatif à la conception, l'horaire de livraison ou des directives de toutes sortes doit être soumis par écrit. UPONOR n'est pas responsable de tels changements, sauf si elle les accepte d'abord par écrit et alors seulement selon des modalités qu'elle établira pour couvrir tous frais additionnels causés par de tels changements.
3. Les prix sont indiqués en fonction des quantités et des livraisons, telles qu'elles sont énoncées, et toute déviation demandée par le client peut exiger des frais additionnels dont il sera responsable.
4. Toute taxe qui peut, ou pourra par la suite, être imposée par une autorité taxatrice relativement à cet instrument, produit ou vente contracté sera ajoutée ou fera partie du prix à payer par l'acheteur.
5. UPONOR n'est pas responsable de toute perte ou tout dommage causé par un retard ou l'incapacité d'obtenir du matériel ou de la main-d'œuvre spécialisée, l'attribution prioritaire ou autre règlement matériel ou toute autre cause semblable ou non.
6. Toute réclamation pour pénuries ou rejet doit être effectuée dans les 10 jours après réception des marchandises. UPONOR n'est pas responsable de toute réclamation effectuée après cette période de 10 jours. Les réclamations pour bris, dommages ou pertes doivent être présentées directement au transporteur dès réception de la marchandise.
7. Il est entendu que les dates de livraison stipulées dépendent de conditions en vigueur à la date d'acceptation du bon de commande et que la Société n'est pas responsable de tout retard de ladite livraison ou de l'annulation de la commande qui peut être causé (e) par des conditions imprévisibles ou indépendantes de sa volonté au moment où la commande est passée.
8. UPONOR a le droit de modifier, sans préavis, les spécifications et la conception du produit, de même que la configuration des pièces vendues, pourvu que de telles modifications n'affectent pas matériellement le rendement.
9. UPONOR se réserve le droit de retenir l'envoi de tout article commandé jusqu'à ce que les modalités de paiement soient respectées à la satisfaction de la Société.
10. Tous les produits sont seulement vendus dans des quantités emballées inscrites.
11. Une fois acceptées, les commandes seront en vigueur, par contrat, selon les lois du Canada et ne seront pas changées, modifiées ou limitées par tout article imprimé pouvant être inclus dans le bon de commande d'un client ou par toute entente verbale, sauf si de tels changements sont acceptés par la Société par écrit.
12. La commande minimum est de 100 \$ NET.
13. Les frais de transport seront prépayés pour toute commande de plus de 15 000 \$ NET. Communiquez avec votre représentant UPONOR pour connaître les modalités et les conditions relatives aux commandes urgentes et la structure d'escompte.
14. Sur approbation de crédit, les modalités de paiement sont de 30 jours NETS de la date de facturation. Les frais de gestion s'appliquent aux comptes en souffrance au taux de 1,5 % par mois, ce qui représente un taux de pourcentage annuel de 18 %.
15. Les grossistes seront informés, sous pli séparé, de tout escompte applicable au prix de liste.
16. Les prix peuvent changer sans préavis.
17. Veuillez noter que : UPONOR a une politique de retour de produits. Pour obtenir de l'aide pour retourner des produits, veuillez communiquer avec votre représentant UPONOR qui pourra vous conseiller sur la marche et les politiques à suivre pour retourner des marchandises à notre établissement. Afin de mieux vous servir, UPONOR émettra un numéro d'autorisation de retour de produits (RMA) qui assurera que toute demande de retour de produit sera traitée de façon rapide et efficace.

Politique de transport

Envois chargement partiel et complets

Toute commande de plus de 15 000 \$ NET sera expédiée prépayée dans un délai de 5 jours ouvrables. UPONOR acceptera des bons de commande d'un maximum de quatre différentes succursales pour pouvoir obtenir le transport prépayé si les conditions suivantes sont respectées :

- Les commandes doivent être reçues par UPONOR en même temps.
- Les commandes doivent être expédiées le même jour.
- Il faut préciser que certaines commandes sont jumelées (piggyback) lorsqu'elles sont passées et confirmer avec quelles commandes elles seront expédiées.
- UPONOR n'est pas responsable d'organiser des commandes jumelées.
- UPONOR ne retiendra pas des commandes en attendant que d'autres succursales passent leurs commandes.
- Le service prépayé est un avantage offert à la seule discrétion d'UPONOR; par conséquent, un délai de 5 jours ouvrables s'applique à toute commande prépayée.
- Toutes les commandes urgentes seront expédiées port dû par l'entremise de votre transporteur.

Toute commande de moins de 15 000 \$ NET sera expédiée port dû dans un délai de 5 jours par l'entremise de votre transporteur.

Expédition par messagerie

L'expédition par messagerie (envois de moins de 250 lb) sera effectuée dans un délai de 3 jours ouvrables. Le client doit indiquer le transporteur.

Expédition urgente

Les commandes seront expédiées le même jour si les conditions suivantes sont respectées :

- Les commandes urgentes doivent être clairement indiquées.
- Le client doit indiquer le transporteur et payer les frais de transport.
- L'envoi doit peser moins de 250 lb.
- Le bon de commande doit être reçu par UPONOR avant :
 - 11 h (HNE) pour les envois de Brampton.
 - 13 h (HNE) pour les envois de Régina.
- Les commandes reçues après l'heure limite seront expédiées le jour ouvrable suivant.
- Les commandes doivent respecter le minimum de 100 \$ NET.

Toute commande urgente pesant plus de 250 lb sera considérée si elle ne nuit pas à nos normes de service standards. L'approbation doit être obtenue du directeur de la distribution. Veuillez noter que les commandes urgentes ne sont pas admissibles au transport prépayé. Si la commande prépayée est exigée dans un délai de moins de 5 jours ouvrables, les frais de transport seront imputés port dû par l'entremise du transporteur choisi par le grossiste. Le service prépayé est un avantage offert à la seule discrétion d'UPONOR; par conséquent, un délai de 5 jours ouvrables s'applique à toute commande prépayée.

Note* : Aux fins de facturation, UPONOR exige une commande minimum de 100 \$ NET de la part de tous les distributeurs avec inventaire de produits Uponor.